

# Carle in the Community

## A Powerful Impact

As the area's trusted healthcare provider, serving and improving the health of our community members is central to everything we do at Carle. Our commitment to the community reflects our mission to serve by delivering world-class care, conducting impactful medical research, and training the providers and caregivers of tomorrow.

As part of our dedication to improving the health of the people we serve, we're constantly collaborating with other providers, research and teaching organizations, community organizations, and policymakers to expand access to programs and resources that address issues that impact the health and well-being of our community members.

### DEFINING COMMUNITY BENEFIT

Community benefit has many components, including charitable activities of the not-for-profit Carle Foundation Hospital, Carle Physician Group and other Carle entities.



#### Charity Care

Care that's provided at no cost to our patients, regardless of their ability to pay.



#### Donations

Charitable donations and in-kind gifts to community partners.



#### Community Health

Programming support within the community.



#### Medicare/Medicaid Unpaid Costs

Unreimbursed care provided to patients covered by Medicare and Medicaid.



#### Research

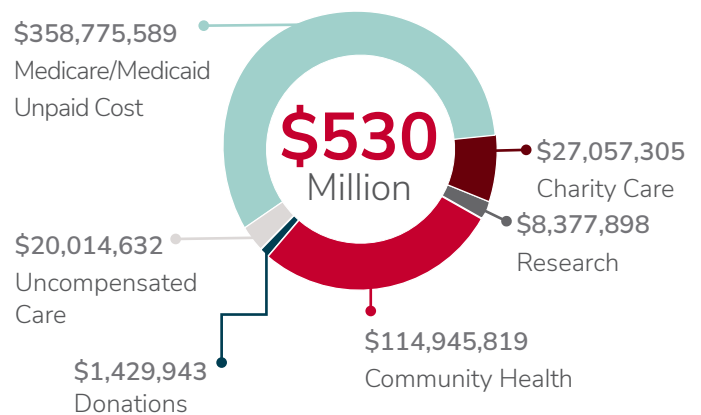
Costs associated with our clinical research program.



#### Uncompensated Care

Care for which Carle received no payment.

### SERVICES, DONATIONS AND SUPPORT TO OUR COMMUNITIES IN 2022



**\$27+**  
million

in free or discounted care to our patients.

**24,000+**

patients who received free or discounted care.

**100+**

donations to community organizations.

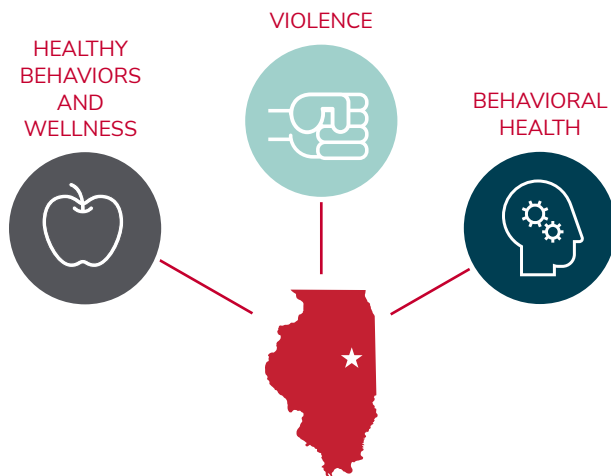
## OUR COMMITMENT IN ACTION

Through our Community Health Initiatives, we're working with area partners to address the root causes of health concerns facing the people we serve. Our Healthy Food Boxes Program contributed over 1,100 nutritious food boxes to families in need in 2022 alone. In 2022, Healthy Beginnings completed 3,883 visits and 3,907 nurse-to-patient contact hours. The Mobile Market and Mobile Health Clinic travel five to six days a week, offering locally grown produce, full-service medical care and access to social service supports. The Mobile Health Clinic also works with local schools to offer large events providing physicals and immunizations, keeping students compliant with state requirements. In 2022, the Mobile Health Clinic operated 235 days and offered eight large school events, for a total of 2,571 patients seen with an additional 862 encounters for COVID-19 vaccinations. Mobile Health Services will be expanding into McLean County in 2023 with a new clinic, offering full health and social services. Through continued partnerships, Mobile Health is increasing access to care and offering more services. Regardless of life or financial circumstances, we help patients improve their health.



## COMMUNITY BENEFIT FOCUS

Working with industry peers and partners, we continually evaluate the needs of the people and communities we serve. Using this information, we developed a comprehensive plan to not only guide our efforts, but to make the greatest difference in the health and wellness of our communities. The three key health issues most impacting our area are:



With the help of our partners, our community programs are advancing healthcare services for the under- and uninsured, addressing the addiction epidemic in our area, encouraging healthy habits, and supporting victims of domestic violence, sexual assault and child abuse.

Driven by our mission and vision, Carle is committed to going above and beyond to ensure patients and community members have access to the care and resources they need to meet their unique needs.

## CHARITY CARE

As a dedicated community partner, Carle cares for people regardless of their ability to pay. We're committed to ensuring all our patients receive the care they need, while remaining responsible stewards of our resources. As healthcare evolves, regulations shift and reimbursements change, we must remain vigilant in fulfilling this mission.

# 2022

## 24,721

individuals who received  
free or discounted care.

## \$27,057,305

charity care at cost.

## \$530,601,186

annual community benefit.

For more information, or to view an online version of this community benefit report, please visit [carle.org/impact](https://carle.org/impact) or email [PublicRelations@carle.com](mailto:PublicRelations@carle.com).

