

Carle in the Community

A powerful impact.

As the region's trusted healthcare provider, serving and improving the health of our community members is central to everything we do at Carle. Our commitment to the community reflects our mission to serve by delivering world-class care, conducting impactful medical research and training the providers and caregivers of tomorrow.

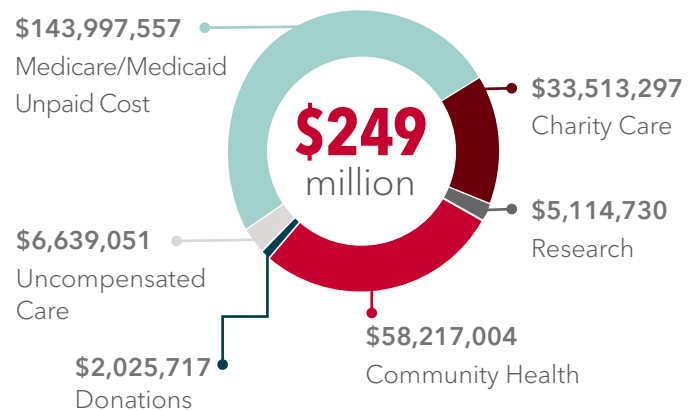
As part of our dedication to improving the health of the people we serve, we're constantly collaborating with other providers, research and teaching organizations, community organizations and policymakers to expand access to programs and resources that address issues that impact the health and well-being of our community members.

DEFINING COMMUNITY BENEFIT

Community benefit has many components, including charitable activities of the not-for-profit Carle Foundation Hospital, Carle Physician Group and other Carle entities.

- 
Charity Care
Care that's provided at no cost to our patients, regardless of their ability to pay
- 
Donations
Charitable donations and in-kind gifts to community partners
- 
Community Health
Programming support within the community
- 
Medicare/Medicaid Unpaid Costs
Unreimbursed care provided to patients covered by Medicare and Medicaid
- 
Research
Costs associated with our clinical research program
- 
Uncompensated Care
Care for which Carle received no payment

SERVICES, DONATIONS AND SUPPORT TO OUR COMMUNITIES IN 2019



\$33.5 million in free or discounted care to our patients

37,000 +
Patients who received free or discounted care

100 +
Donations to community organizations

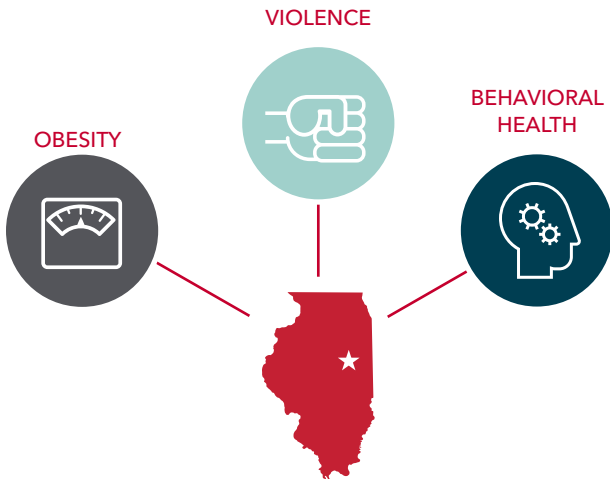
OUR COMMITMENT IN ACTION

Through our Community Health Initiatives, Carle is working closely with our area partners to address the root causes of health concerns facing the people we serve. On August 2, 2018, the Carle Mobile Health Clinic launched, bringing the same world-class care found at Carle locations to members of the community, right where they live. The 40-foot clinic travels weekly throughout Champaign and Urbana to provide non-urgent care for infants through adults, joining forces with neighborhoods, schools, churches and other community partners. In 2019, the Mobile Health Clinic expanded from 5 to 13 locations that services are provided. The Mobile Health Clinic was in service 163 days and completed 1,231 visits. Together with our partners, we're building a culture of health and creating opportunities for families to be prosperous and be healthy, regardless of life circumstances.



COMMUNITY BENEFIT FOCUS

Working with industry peers and partners, we continually evaluate the needs of people and communities we serve. Using this information, we developed a comprehensive plan to not only guide our efforts, but make the greatest difference in the health and wellness of our communities. The three key health issues most impacting our region are:



With the help of our partners, our community programs are advancing healthcare services for the under- and uninsured, addressing the addiction epidemic in our region, encouraging healthy habits and supporting victims of domestic violence, sexual assault and child abuse.

Driven by our mission and vision, Carle is committed to going above and beyond to ensure patients and community members have access to the care and resources they need to meet their unique needs.

CHARITY CARE

As a dedicated community partner, Carle cares for people regardless of their ability to pay. We're committed to ensuring all our patients receive the care they need, while remaining responsible stewards of our resources. As healthcare evolves, regulations shift and reimbursements change, we must remain vigilant in fulfilling this mission.

Year	Individuals who received free or discounted care	Charity care at cost	Annual community benefit
2019	37,802	\$33,513,297	\$249,507,356
2018	35,104	\$34,864,619	\$195,873,183
2017	34,563	\$32,411,332	\$185,340,458
2016	33,335	\$30,181,091	\$146,088,832
2015	33,972	\$30,628,548	\$140,700,632
2014	31,608	\$38,948,569	\$118,801,368

For more information, or to view an online version of this community benefit report, please visit carle.org/impact or email publicrelations@carle.com