



# COMMUNITY HEALTH PLAN

# OVERVIEW

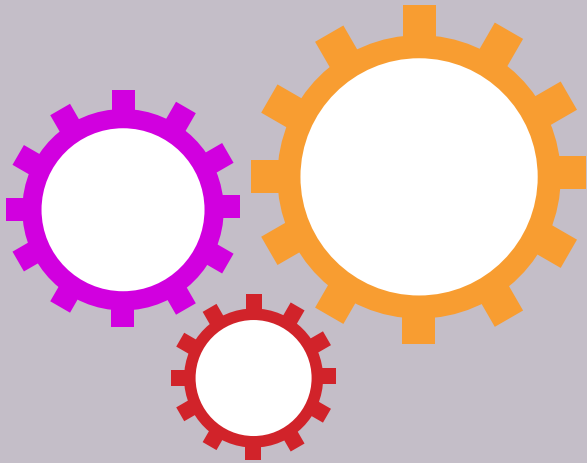


The Vermilion County Health Department (VCHD) is the local public health authority for Vermilion County. VCHD, in conjunction with Carle Hoopeson Regional Health Center and OSF HealthCare Sacred Heart Medical Center (formerly Presence Health), and United Way of Danville Area, used the Assessment Protocol for Excellence in Public Health (APEX-PH) model for assessment and the development of the Community Health Plan.

Since 2014, the Vermilion County Health Department and the Hospitals have moved from independently conducting the Community Health Needs Assessment (CHNA) and Community Health Plan to a collaborative movement. Carle Hoopeson Regional Health Center, OSF HealthCare Sacred Heart Medical Center the United Way of Danville Area, and the Vermilion County Health Department formed an Executive Committee to conduct the assessment and health plan to fulfill the requirements for certification.

# THE PLANNING PROCESS

## APEX-PH



The Vermilion County Community Health Plan was created using the Assessment Protocol for Excellence in Public Health (APEX-PH).

This collaborative approach to community health planning was developed by the National Association of County and City Health Officials (NACCHO) in cooperation with the Public Health Practice Program Office and the Centers for Disease Control and Prevention (CDC).

APEXPH is a flexible planning tool developed for local health officials to: Assess the organization and management of the health department; Provide a framework for working with community members and other organizations to assess the health status of the community; and Establish the leadership role of the health department in the community.

## APEX-PH's 3 Components

### ORGANIZATIONAL CAPACITY ASSESSMENT

01

The Organizational Capacity Assessment uses the health department's staff to identify and analyze strengths and weaknesses of the organization and to develop and implement strategic plans.

### THE COMMUNITY PROCESS

02

The Community Process involves collecting and analyzing health data, forming a committee, identifying, prioritizing, and analyzing community health problems, and developing a community health plan.

### COMPLETING THE CYCLE

03

Completing the Cycle involves basic monitoring and evaluation functions necessary to ensure that the Organizational Strategic Plan and the Community Health Plan are effectively carried out and that they accomplish the desired results.

# PURPOSE

Vermilion County brought together the concerns of the community and community partners to identify community issues critical in developing a community health plan.



# PRIORITIES

## Teen Pregnancy

Increase parent involvement, increase extracurricular activities, promote sexual education, promote community programs, and target male teens / male involvement to reduce the teen pregnancy rate.



## Substance Abuse

Plan and implement strategies that prevent and reduce substance use and its associated consequences among youth and adults through community and countywide collaborative efforts.



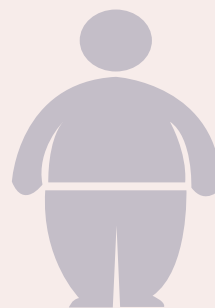
## Mental Health

Invest in creating positive mental health through a trained youth mental health first aid community, identifying resources and reducing the stigma through a grassroots media campaign.



## Obesity

Improve access to healthy food options, support local produce and garden shares, promote physical activity opportunities, and advocate for community programs.



# OUR HEALTH STATUS

6%

Of Vermilion County Residents were **UNINSURED** in 2015, compared to 14% in 2010.



## TEEN BIRTH RATE

(per 1,000 female population, ages 15-19) in Vermilion County is

50

compared to 66 in 2011.

**DRUG RELATED DEATHS**  
in Vermilion County  
(2013-2016)

63



**VIOLENT CRIME RATE**  
(per 100,000 population)  
is

605

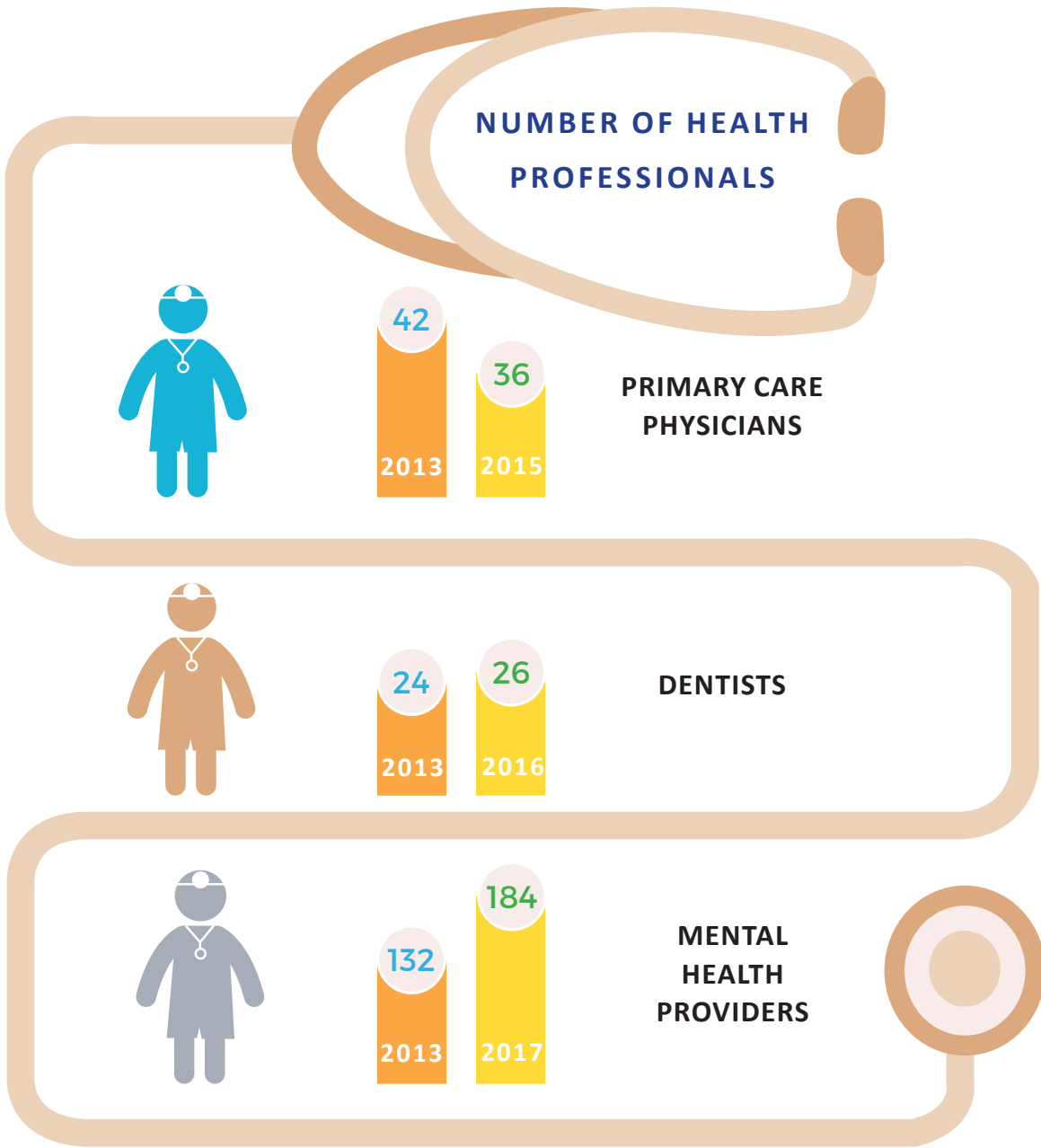


**SUICIDE RATE**  
(per 100,000 population)  
in Vermilion County is

13.2



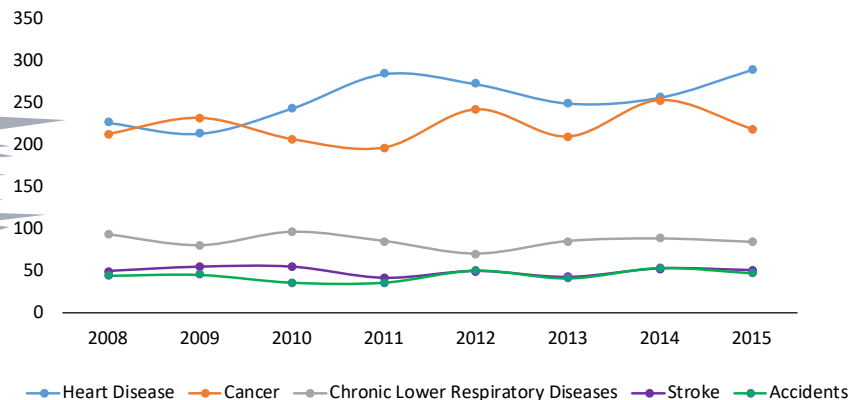
# OUR HEALTH STATUS



## LEADING CAUSES OF DEATH (2008-2015)

In 2015, the 5 leading causes of death nationally were heart disease, cancer, chronic lower respiratory diseases, accidents (unintentional), and stroke.

Vermilion County's leading causes of death align with the leading causes of death of the nation.



# OUR HEALTH STATUS

## TEEN PREGNANCY in Vermilion County

31%

of teen moms surveyed, said they wanted to have a baby when asked why they had sex

17.5%

SAY THEY "NEVER" EAT DINNER WITH THEIR PARENTS

5.1%

OF TEENS REPORT HAVING SEX BEFORE REACHING 13 YEARS OLD

45.4%

OF OUR TEENS HAVE HAD SEXUAL INTERCOURSE AT LEAST ONCE IN THEIR LIVES, A DECREASE OF 9.2% SINCE 2014

6%

OF HIGH SCHOOL STUDENTS HAVE BEEN PREGNANT ONE OR MORE TIMES OR HAVE FATHERED A CHILD ONE OR MORE TIMES, A DECLINE OF 22% SINCE 2014

83.3%

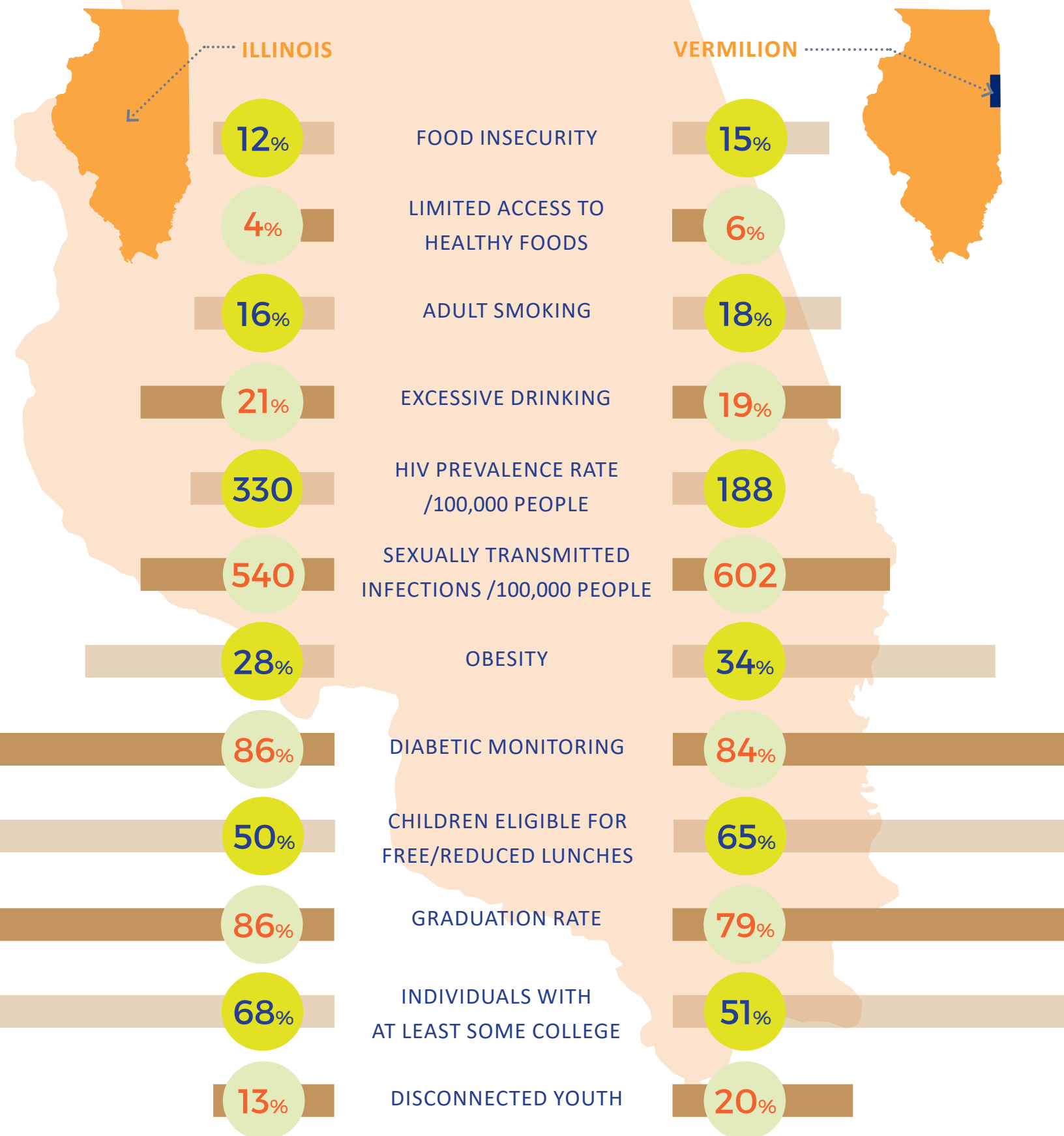
OF YOUTH SAY THEY HAVE A TRUSTED ADULT THEY CAN TALK TO

22%- 27%

OF HIGH SCHOOL STUDENTS REPORT THAT THEY DO NOT PARTICIPATE IN ANY EXTRACURRICULAR ACTIVITIES AND/OR OPPORTUNITIES

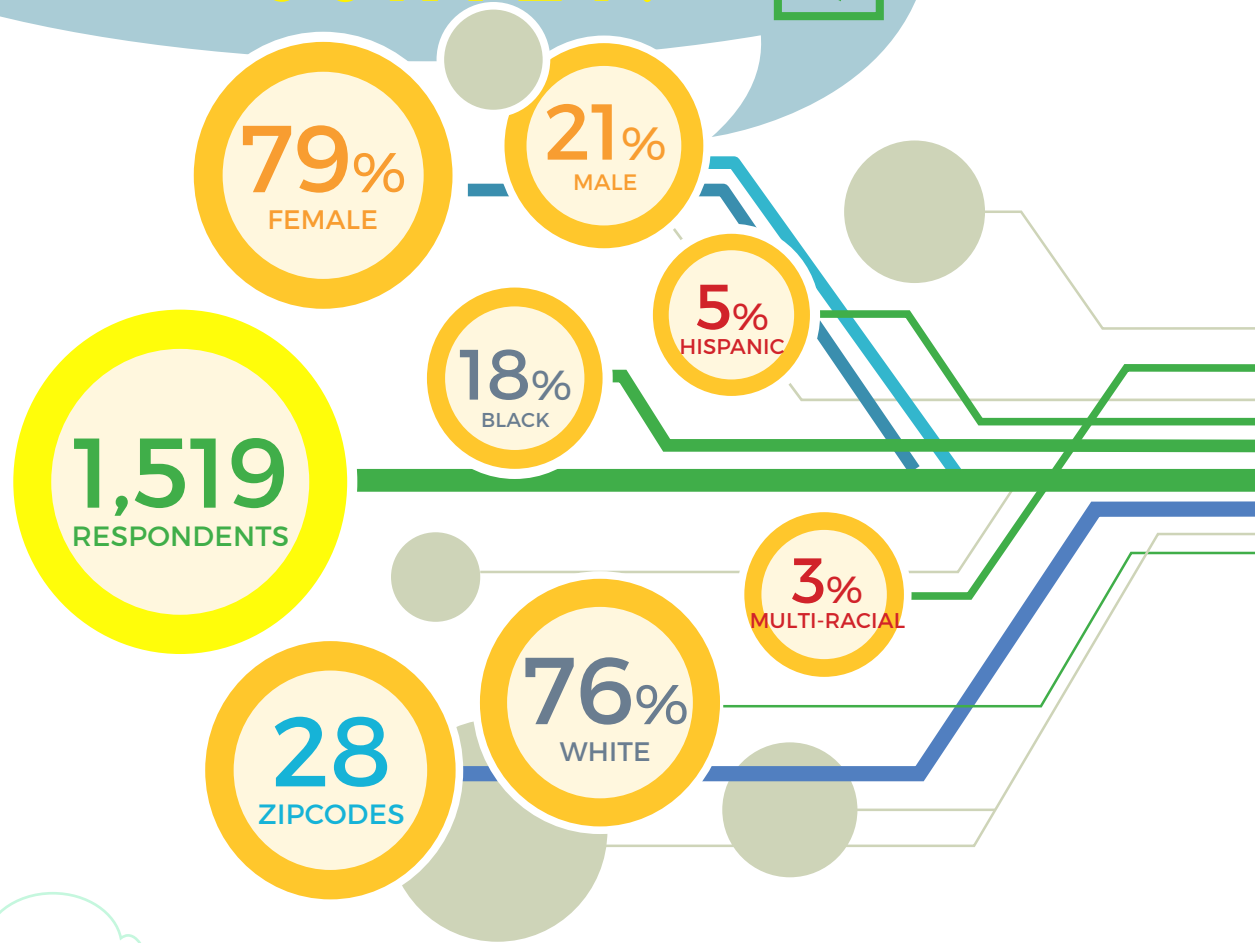
Vermilion County  
high school teens  
surveyed through  
the I Sing the Body  
Electric Program  
showed:

# OUR HEALTH STATUS

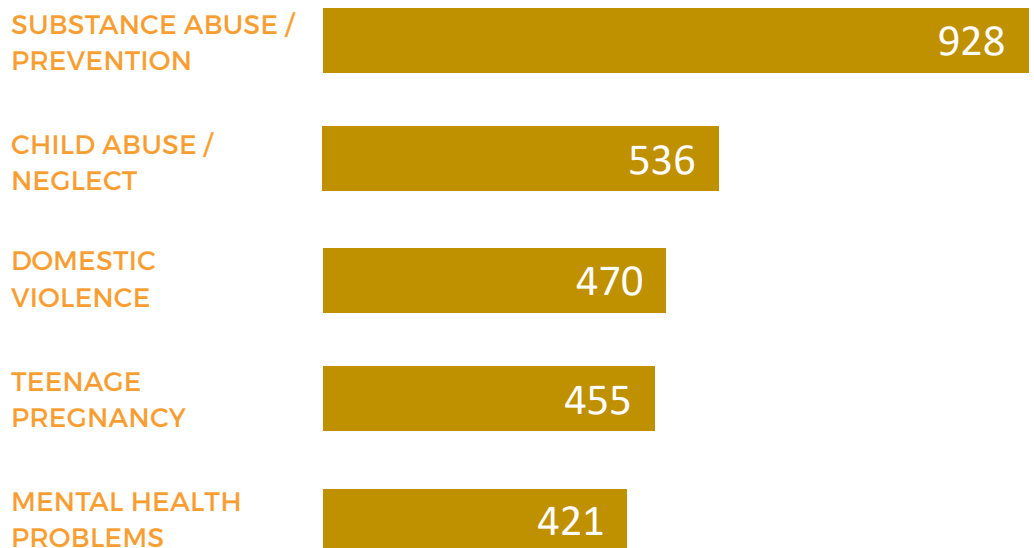




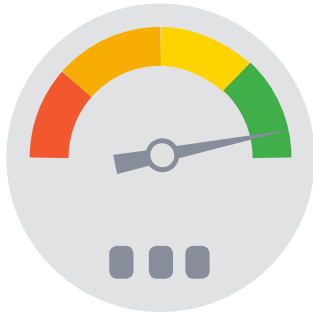
# COMMUNITY HEALTH SURVEY!



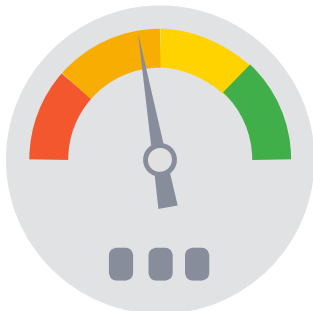
## TOP 5 HEALTH CONCERNS OF VERMILION COUNTY SURVEY RESPONDENTS



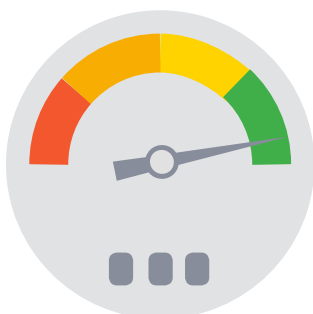
# WHAT THE COMMUNITY THINKS



**91%** SAY MEDICAL SERVICES ARE AVAILABLE AND ACCESSIBLE IN VERMILION COUNTY



**45%** OF HOUSEHOLDS MAKING BELOW \$30,000 SAY THAT PUBLIC TRANSPORTATION IS ONE OF OUR GREATEST STRENGTHS



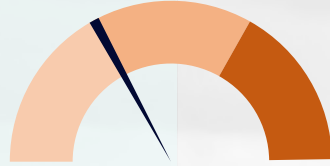
**94%** RATED THEIR OWN PERSONAL HEALTH WITH AT LEAST SOMEWHAT HEALTHY OR BETTER



# COMMUNITY CONCERNS

## ACCESS TO SERVICES

33%

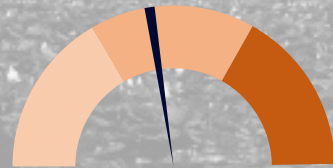


Do not feel that

**Substance / Alcohol Abuse Services or  
Mental Health Services**

are available

44%

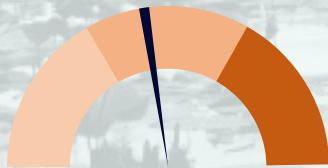


Do not feel that

**Affordable Childcare**

is available

42%

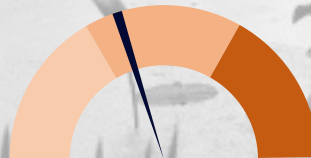


Do not feel that

**Access to STD Services**

are available

39%



Do not feel that

**Easy access to contraceptives**

are available

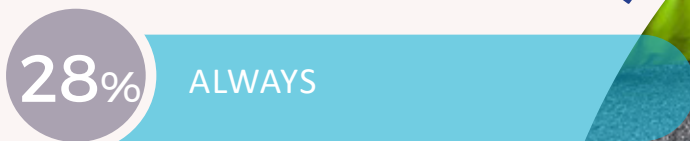
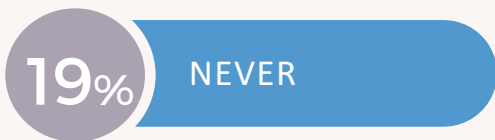
# HEALTH BEHAVIORS OF SURVEY RESPONDENTS



DRINK MORE THAN ONE SUGARY BEVERAGE/day



EXERCISE (at least 3 times a week)



# PRIORITIES



## Reduce Teen Pregnancy

### GOALS



By 2022, reduce by 5% the pregnancy rate among adolescent females aged 15-19



By 2022, increase by 3% the proportion of adolescents aged 17 years and younger who have never had sexual intercourse



By 2022, decrease by 3% the proportion of teen parents whose reason for sexual activity was a goal of becoming a parent



## Increase Substance Abuse Awareness and Services

### GOALS



By 2022, increase by 3% the proportion of 10th and 12th graders never using any substances



By 2022, decrease by 3% the number of drug overdose deaths in Vermilion County



Promote community awareness about substance abuse prevention and treatment



# PRIORITIES



**Increase  
Behavioral  
Health  
Training,  
Awareness  
and  
Services**

## GOALS



By 2022, reduce by 10% the number of suicides among Vermilion County Residents



By 2022, train up to 2,000 Vermilion County individuals in Mental Health First Aid Training



Increase the number of medical professionals that are conducting a stress or mental health screening



**Reduce  
Obesity and  
Promote  
Healthy  
Lifestyles**

## GOALS



By 2022, increase by 1% the proportion of adolescents who report being at a healthy weight



Develop a system for tracking aggregate childhood BMI for Vermilion County



By 2022, reduce by 1% the proportion of adults who report fitting the criteria for obesity

PRIORITIES

# COMMUNITY PARTNERS



Aunt Martha's

Big Brothers Big Sisters

Carle Hoopeston Regional Health Center

Child Care Resource Service

Commercial News

CRIS Healthy Aging Center

Crosspoint Human Services

Danville Area Community College

Danville District #118

Danville Family YMCA

East Central Illinois Community Action Agency

First Financial Bank

Hoopeston CUSD #11

Hoopeston Multi-Agency

Housing Authority of the City of Danville

Iroquois Federal

Neuhoff Broadcasting – WDNL-WDAN-WRHK

OSF HealthCare Sacred Heart Medical Center

Faith in Action

HALO Project

I Sing the Body Electric

Prairie Center / Rosecrance

U of I Extension

United Way of Danville Area

VA Illiana

Vermilion Advantage

Vermilion County Board

Vermilion County Board of Health

Vermilion County Emergency Management Agency

Vermilion County Health Department

Vermilion County Mental Health Board

Vermilion County Rape Crisis Center

Vermilion County Regional Office of Education

Y of the USA

# RESOURCES

To access a complete copy of  
the Vermilion County Community Health Plan (IPLAN),

please visit:

[www.vchd.org](http://www.vchd.org)

For additional data  
about Vermilion County, please visit:

[www.countyhealthrankings.org](http://www.countyhealthrankings.org)

<http://www.dph.illinois.gov/data-statistics>



**OSF**<sup>®</sup>  
HEALTHCARE

**LIVE UNITED**



United Way  
of Danville Area, Inc.

Vermilion County  
Health Department



**Public Health**  
Prevent. Promote. Protect.

**Carle**