



COMMUNITY HEALTH IMPROVEMENT PLAN

CHAMPAIGN COUNTY, ILLINOIS
2018-2020

OVERVIEW

The Champaign-Urbana Public Health District (CUPHD) is the local public health authority for Champaign County. CUPHD, in conjunction with Carle Foundation Hospital, Presence Covenant Medical Center (OSF HealthCare) and United Way of Champaign County, used the Mobilizing for Action through Planning and Partnership (MAPP) model, a community-based model, that necessitates community engagement at all levels, to conduct the Champaign Community Health Assessment (CHA) and Community Health Improvement Plan (CHIP).

Since 2013, the Health District and Hospitals have moved from independently conducting the Community Health Assessment (CHA) and Community Health Improvement Plan (CHIP) to a true collaborative model. Carle Hospital, Presence Covenant Medical Center (OSF HealthCare), the local chapter of United Way, along with the Health District formed an Executive Committee to conduct the CHA and CHIP to fulfill the requirements for certification.

Julia Willis

Community Health Plan Coordinator

The Champaign Regional Executive Committee Members

Awais Vaid

Champaign-Urbana Public Health District

Elizabeth Silver

Carle Foundation Hospital

Julie Pryde

Champaign-Urbana Public Health District

Melissa Rome

Vermilion County Health Department

Doug Toole

Vermilion County Health Department

Mike Billimack

Carle Foundation Hospital

Sheri McKiernan

OSF HealthCare

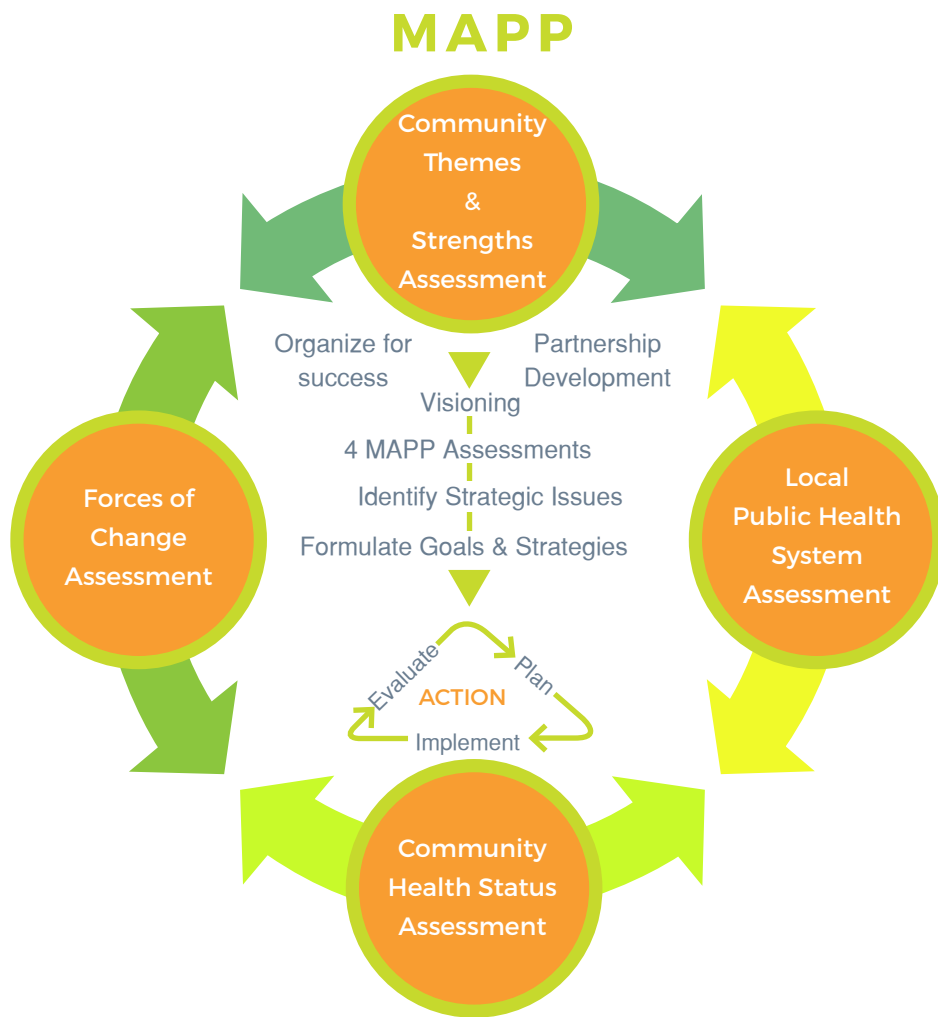
Sue Grey

United Way of Champaign County

Sheri Askren

United Way of Danville Area

THE PLANNING PROCESS



The Champaign County Community Health Plan was created using the **Mobilizing for Action through Planning and Partnerships (MAPP)** Model.

This collaborative approach to community health planning was developed by the National Association of County and City Health Officials (NACCHO) in cooperation with the Public Health Practice Program Office and the Centers for Disease Control and Prevention (CDC).

MAPP helps communities form effective partnerships that can better identify their unique circumstances and needs and use their resources wisely.

MAPP's 4 components

1

The Community Themes & Strengths Assessment uses participants to make a list of issues of importance to the community, identify community assets and outline quality of life concerns.

2

The Local Public Health System Assessment measures the local public health systems ability to conduct essential public health services.

4

The Forces of Change Assessment identifies local health, social, environmental and economic trends that affect the community or public health system.

3

The Community Health Status Assessment collects and analyzes health data and describes health trends, risk factors, health behaviors and issues of special concern.

VISION

Champaign County will be the healthiest, safest, and environmentally sustainable community to live, work, and visit in the State of Illinois



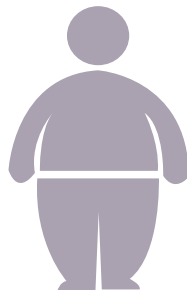
PRIORITIES

Behavioral Health



Increase capacity, create a behavioral health triage center, promote education and training on mental and behavioral health to reduce stigma, and provide youth targeted prevention programs

Reducing Obesity & Promoting Healthy Lifestyles



Improve access to healthy food options, expand physical activity prescription program, and increase access to physical activity

Violence



Promote police-community relations, increase community engagement, and reduce community violence through partnering with local initiatives

OUR HEALTH STATUS



9%

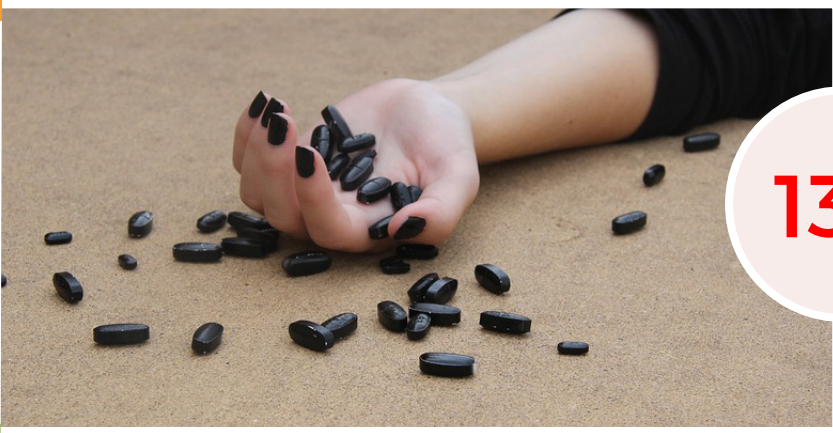
OF CHAMPAIGN COUNTY RESIDENTS WERE **UNINSURED** IN 2017, COMPARED TO 22% IN 2011

TEEN BIRTH RATE

(per 1,000 female population, ages 15-19)
IN CHAMPAIGN COUNTY IS

(which is almost half of the prevalence in Illinois)

18



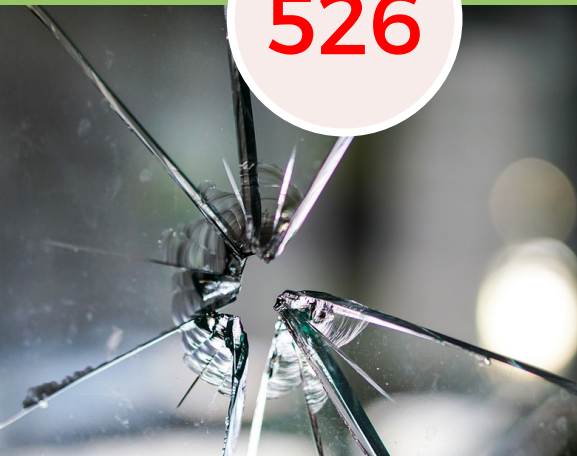
132

DRUG-RELATED DEATHS
IN CHAMPAIGN COUNTY
FROM 2011-2017

VIOLENT CRIME RATE

(per 100,000 population) IS

526



SUICIDE RATE

(per 100,000)
IN
CHAMPAIGN
COUNTY IS

12.9

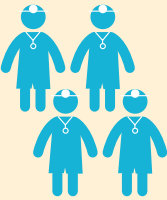
OUR HEALTH STATUS

2014

NUMBER OF HEALTH PROFESSIONALS

2017

188



PRIMARY CARE PHYSICIANS



174

110

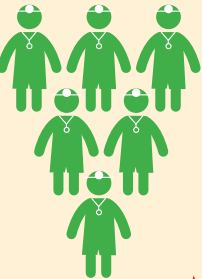


DENTISTS

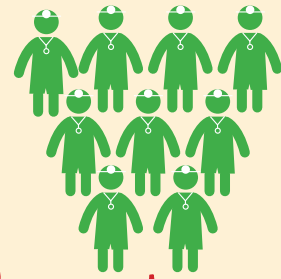


120

335



MENTAL HEALTH PROVIDERS

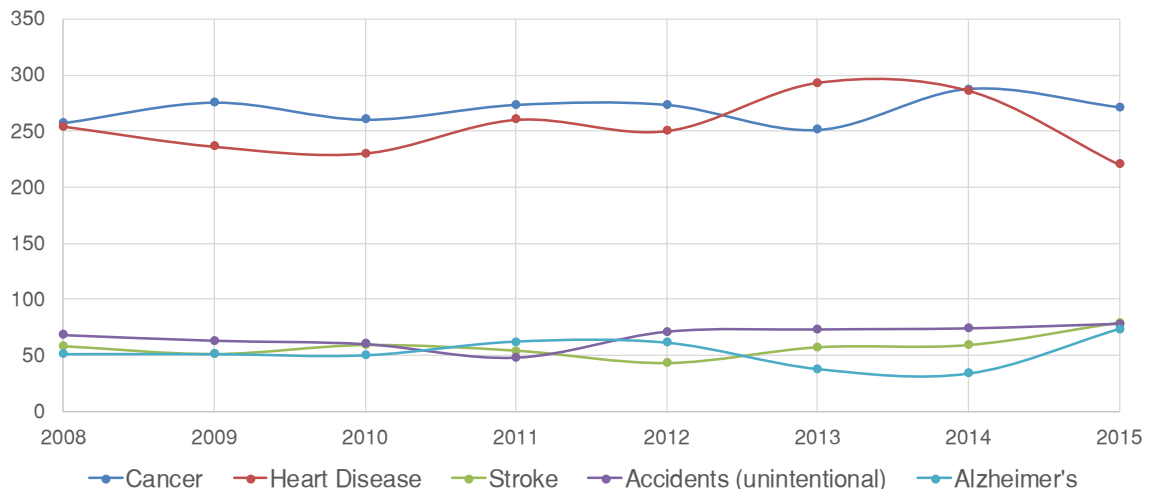


444

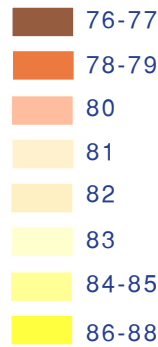
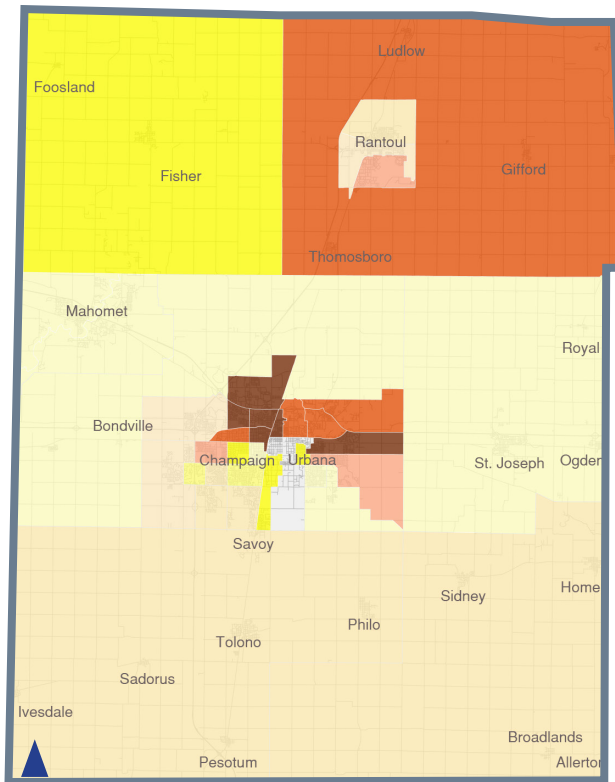
In 2015, the 5 leading causes of death nationally were heart disease, cancer, chronic lower respiratory diseases, accidents (unintentional), and stroke.

Champaign county's leading causes of death in 2015 were similar, except for a few differences.

LEADING CAUSES OF DEATH (2008-2015)



OUR HEALTH STATUS

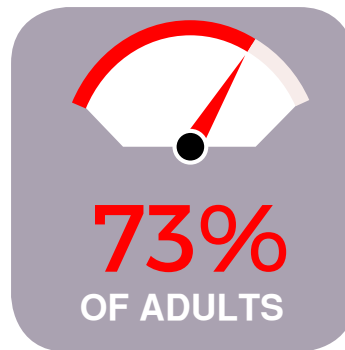
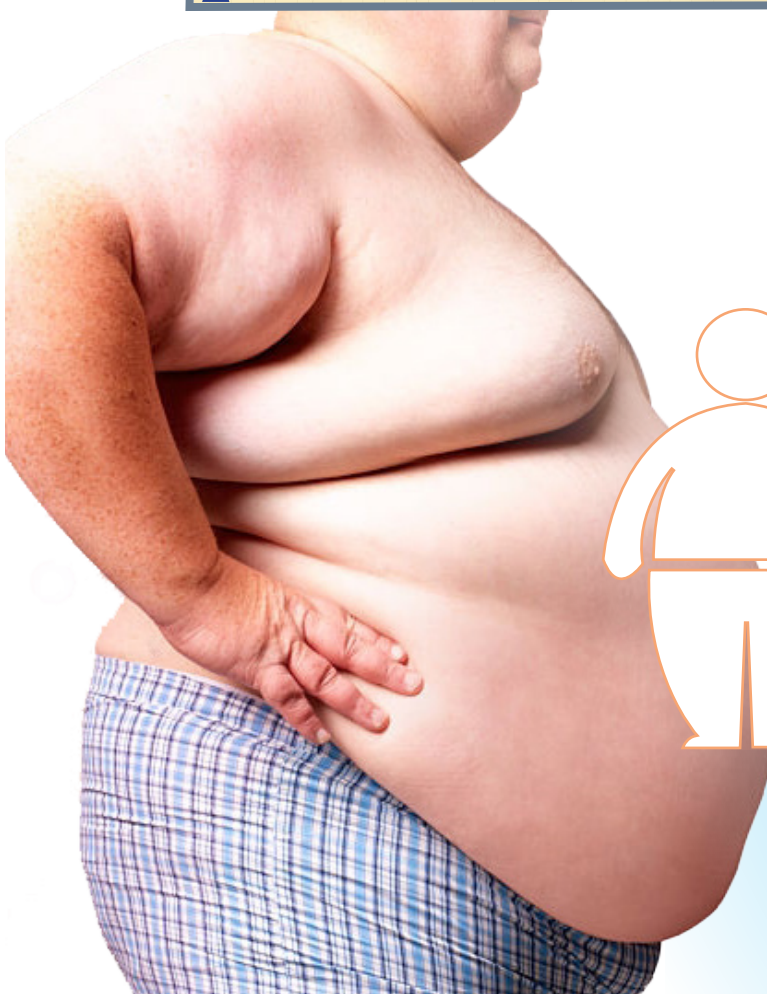


Life Expectancy for Champaign County Census Tracts

2011-2016

Life expectancy for the U.S. population in 2016 was **78.6** years.

Life expectancy for Champaign County Census Tracts ranged from a high of **88** to a low of **76** (2011-2016).



18 yrs and above

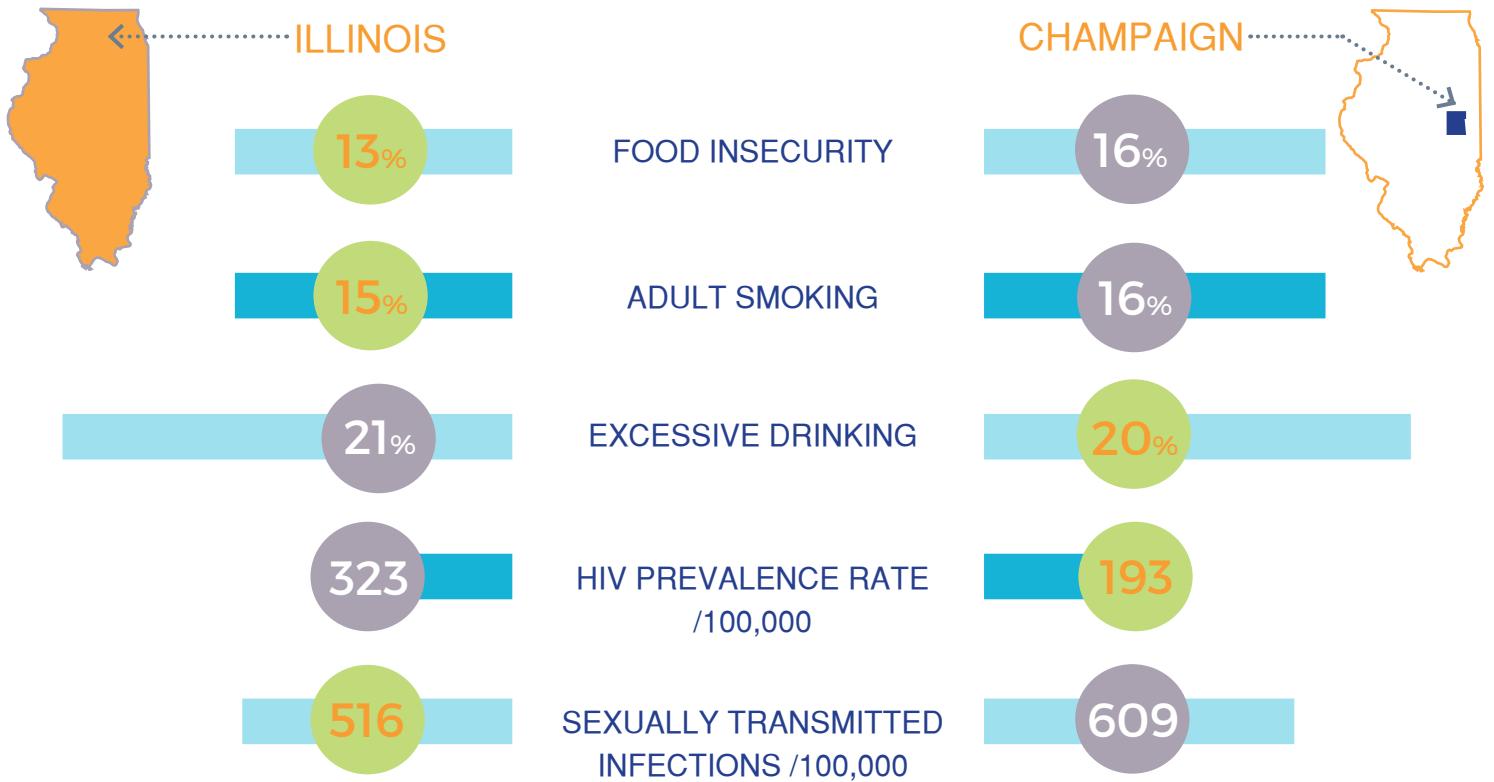


2-17 yrs of age

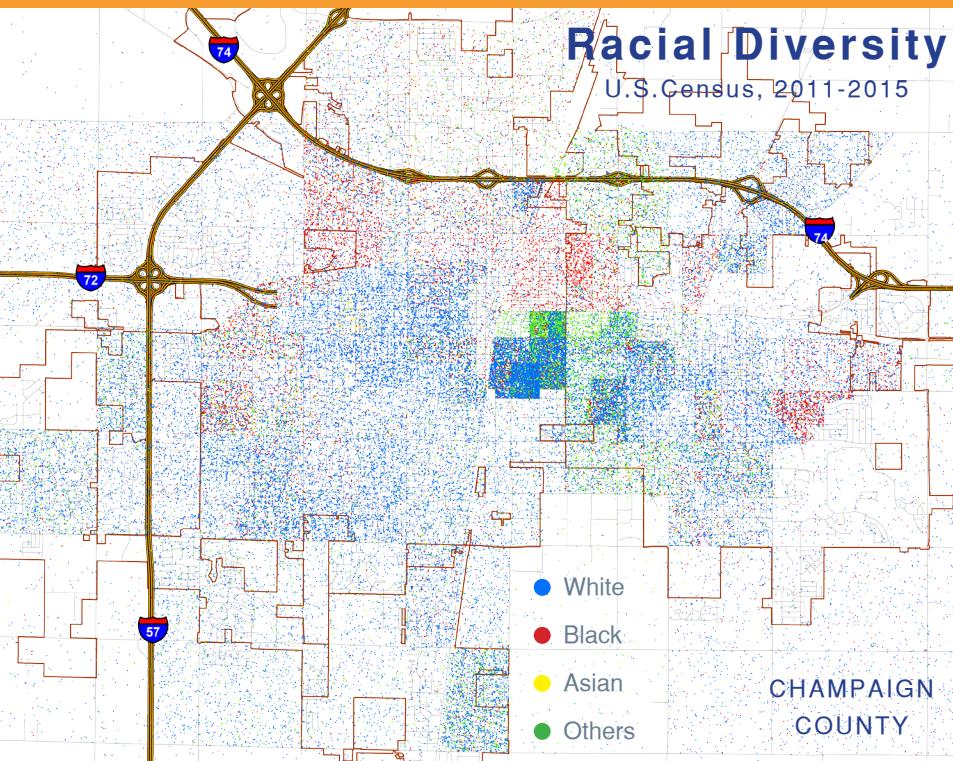


ARE **O**VERWEIGHT
OR **O**BESSE

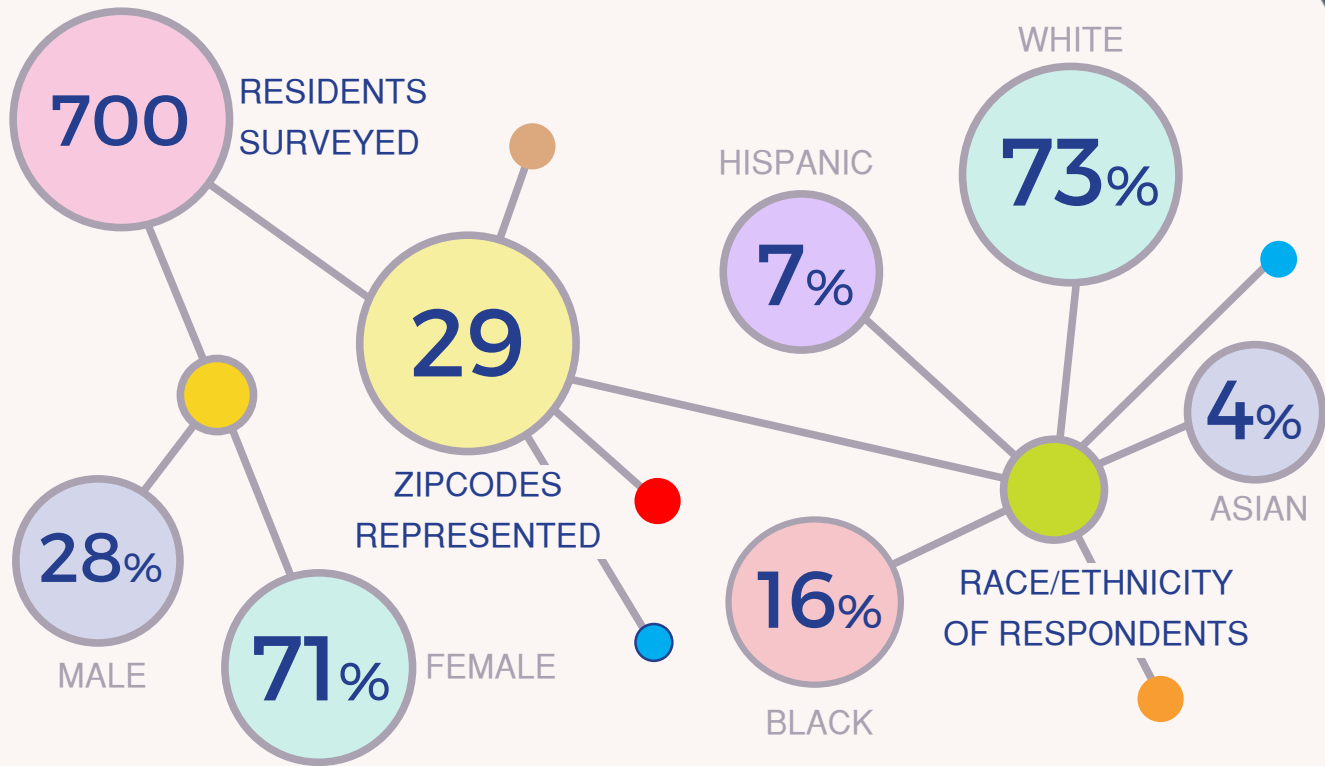
OUR HEALTH STATUS



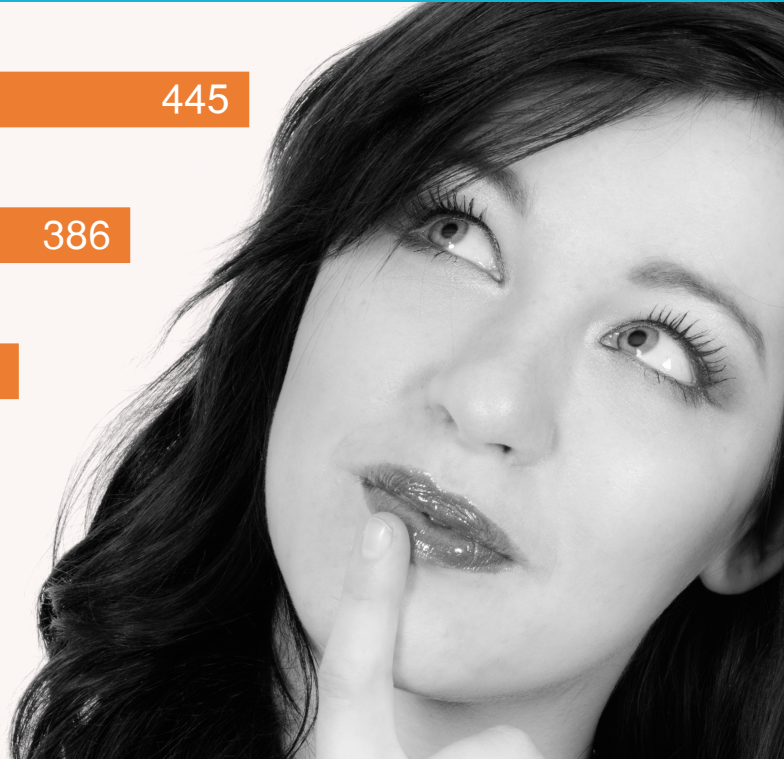
When compared to the State (IL), Champaign County has higher percentages of food insecurity, adult smoking, and sexually transmitted infections (/100,000). In contrast, the rates for HIV prevalence and excessive drinking are lower than the State average (2017 County Health Rankings).



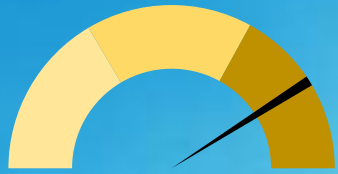
COMMUNITY HEALTH SURVEY



TOP 5 HEALTH CONCERNS OF CHAMPAIGN COUNTY SURVEY RESPONDENTS

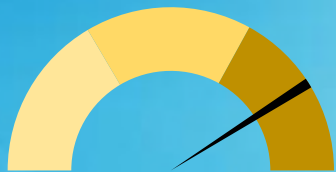


WHAT THE COMMUNITY THINKS



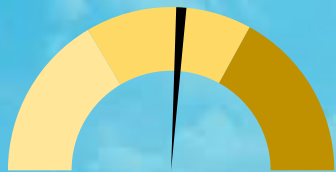
81%

are Satisfied with
ACCESS to Healthcare



79%

are Satisfied with
QUALITY of Healthcare



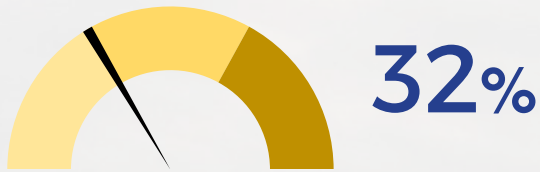
51%

are Satisfied with
COST of Healthcare



NEIGHBORHOOD CONCERNS

SAFETY

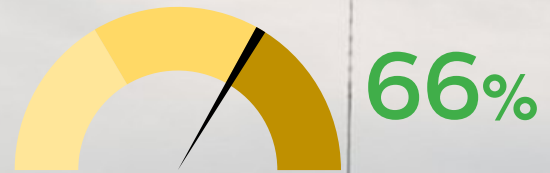


are Concerned/
Very Concerned
about the
CRIME RATE



are Concerned/
Very Concerned
about the lack of
**CRIME PATROLS/
BLOCK WATCHES**

CONNECTIVITY



feel that
ACCESS to Sidewalks is
Good/Excellent



feel that
ACCESS to
Public Transportation is
Good/Excellent

HEALTH BEHAVIORS OF SURVEY RESPONDENTS

FAST FOOD CONSUMPTION



PHYSICAL ACTIVITY (30 min/ each day)





FORCES OF CHANGE

The Forces of Change Assessment identifies local, state and national forces such as social, economic, political and technological that is or will be influencing the health and quality of life of the community and the work of the local public health system.



52 Community Leaders provided input in identifying potential Forces of Change

PRIORITIES

GOALS 2017



Reduce Obesity and Promote Healthy Lifestyles

GOALS



By 2020, reduce by 1%, the proportion of adults in Champaign County who report fitting the criteria for obesity



By 2020, increase by 1%, the proportion adolescents who report being at a healthy weight



By 2020, increase the Food Environment Index by 1



Increase Behavioral Health Awareness and Services

GOALS



Implement early intervention and assessment practices to reduce the impact of mental and substance use disorders



Promote community awareness about behavioral health



Expand current available treatment and develop new treatment services



Reduce Violence

GOALS



Decrease child abuse and neglect, gun violence, and domestic violence in the community by increasing community engagement, fostering better relationships between law enforcement and citizens, and implementing anti-violence initiatives.

COMMUNITY PARTNERS



- Carle Foundation Hospital
- Carle Foundation Hospital
- Champaign County Sheriff's Office
- Champaign County Board of Health
- Champaign County Head Start
- Champaign County Health Care Consumers
- Champaign County Mental Health Board
- Champaign County Regional Planning Commission
- Champaign Park District
- Champaign Police Department
- Champaign Urbana Public Health District
- Christie Clinic
- City of Champaign Neighborhood Services
- City of Urbana
- Community Gardens at Leirman
- Court Appointed Special Advocates for Children
- CRIS Healthy Aging
- Crisis Nursery
- C-U at Home
- C-U Mass Transit District
- Cunningham Children's Home
- Developmental Services Center
- Faith in Action
- Family Resiliency Center
- Family Service Center
- Greater Community AIDS Project
- Habitat for Humanity
- Healthy Champaign County
- Illinois Dental Society
- Land of Lincoln Legal Assistance
- McKinley Health Center
- Midwest Center for Investigative Reporting
- National Alliance on Mental Illness
- Parkland College
- Prairie Center
- Presence Health
- Promise Healthcare
- Prosperity Garden
- Rosecrance
- U of I Schools of Earth, Society, and Environment
- United Way of Champaign County
- University of Illinois College of Medicine
- University of Illinois at Urbana Champaign
- University of Illinois Extension Office
- University of Illinois Police Department
- Urbana Adult Education
- Urbana Neighborhood Connections Center
- Urbana Park District
- Urbana School District
- Wells Fargo

RESOURCES

To access a complete copy of the Champaign County
Community Health Improvement Plan, please visit:

www.c-uphd.org

For additional data about Champaign County, visit:

www.countyhealthrankings.org
www.idph.il.us/health/statshome

To learn more about the MAPP process,
visit the National Association of City and County Health Officials (NACCHO) at:
www.naccho.org/topics/infrastructure/mapp



Public Health
Prevent. Promote. Protect.

