

Hunter Grain, Inc. Farm Directions



If found, please call (217) 768-3492.

Table of Contents

Hemer/Home Place	1
Long 80	2
Clipston 40/New 40.....	3
Back 80.....	4
McGraph 80.....	5
Larson.....	6
Ditchy 40.....	7
Corner 40.....	8
North 80.....	9
South 80/Scott's Place.....	10
Hilvety 80.....	11
Clipston 76/Borders'	12
Hemer-Hays Ground.....	13
Cook Farm.....	14
Orris Farm.....	15
80/Downs/Louise's Farm.....	16
Weck Farm.....	17
Field Across the Road.....	18
Cox/Griesbaum.....	19
Groves.....	20
Doc's.....	21
East 100.....	22
Mose 80.....	23

Farm Name: Hemer/Home Place

Acreage: 40

Township: Moweaqua

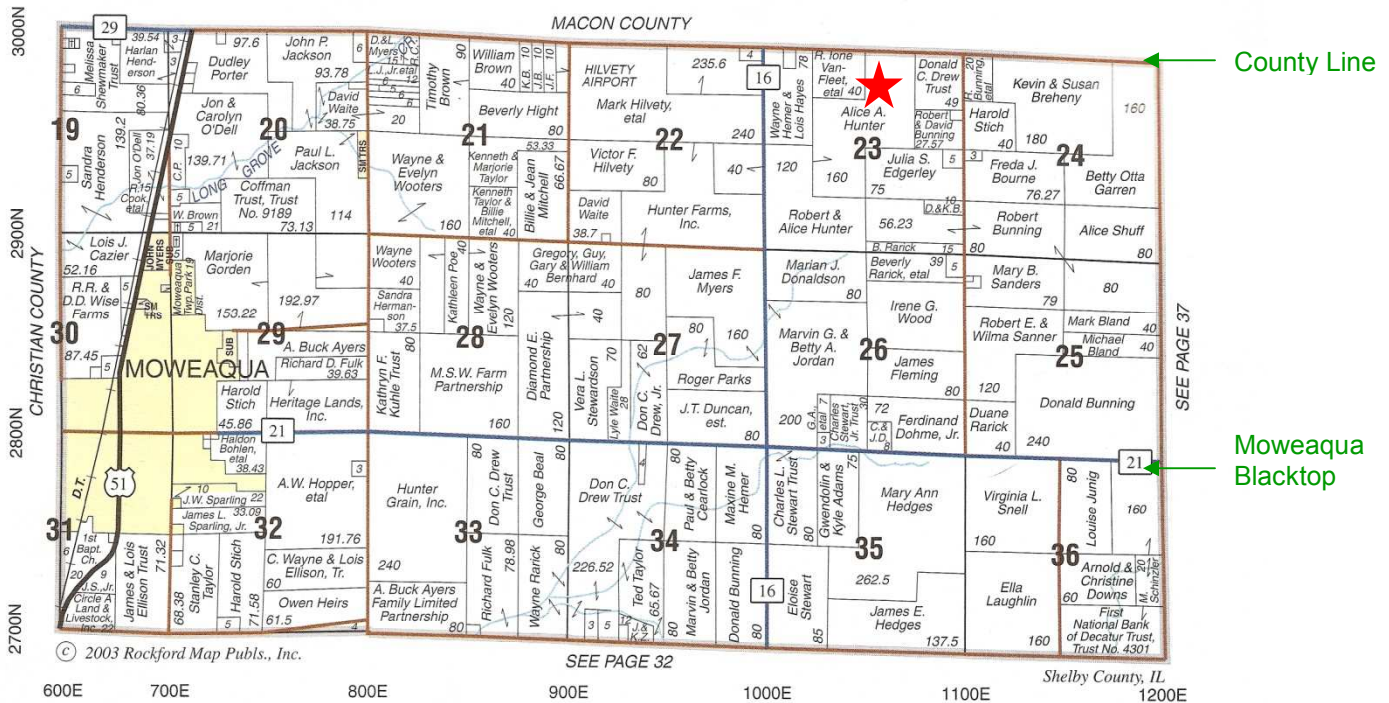
Section: 23

County: Shelby

Local Intersection: 3000 N. & between 1000 & 1100 E. (Shelby) or Hilvety Rd (0 N.) & between Jacobs Rd. & Cornthwaite Rd. (Macon)

MOWEAQUA

T.14N.-R.2E.



Directions from Hemer-Hunter Farm:

You are on it!

Directions from Moweaqua:

Go east on the Moweaqua Blacktop (2800 N.) 3 miles to 1000 E or the Tower Hill Blacktop. Then go north (left) on 2 miles to Hilvety Rd. (3000 N.) & go east (right) ¾ miles. They farm is on the south (right) side of the road.

Directions from Macon:

Go east on 400 N. for 2 miles to Jacobs Rd. (Tower Hill Blacktop). Turn south (right) & go 4 miles to Hilvety Rd. (0 N. or 3000 N.). Turn east (left) & travel ¾ miles. The farm is on the south (right) side of the road.

Point of Reference:

Bob and Alice Ann Hunter's house. 1062 E. 3000 N. RD., Moweaqua, IL

GPS Coordinates: N 39° 39' 11" & W 88° 56' 48"

Farm Name: Long 80

Acreage: 80

Township: Moweaqua

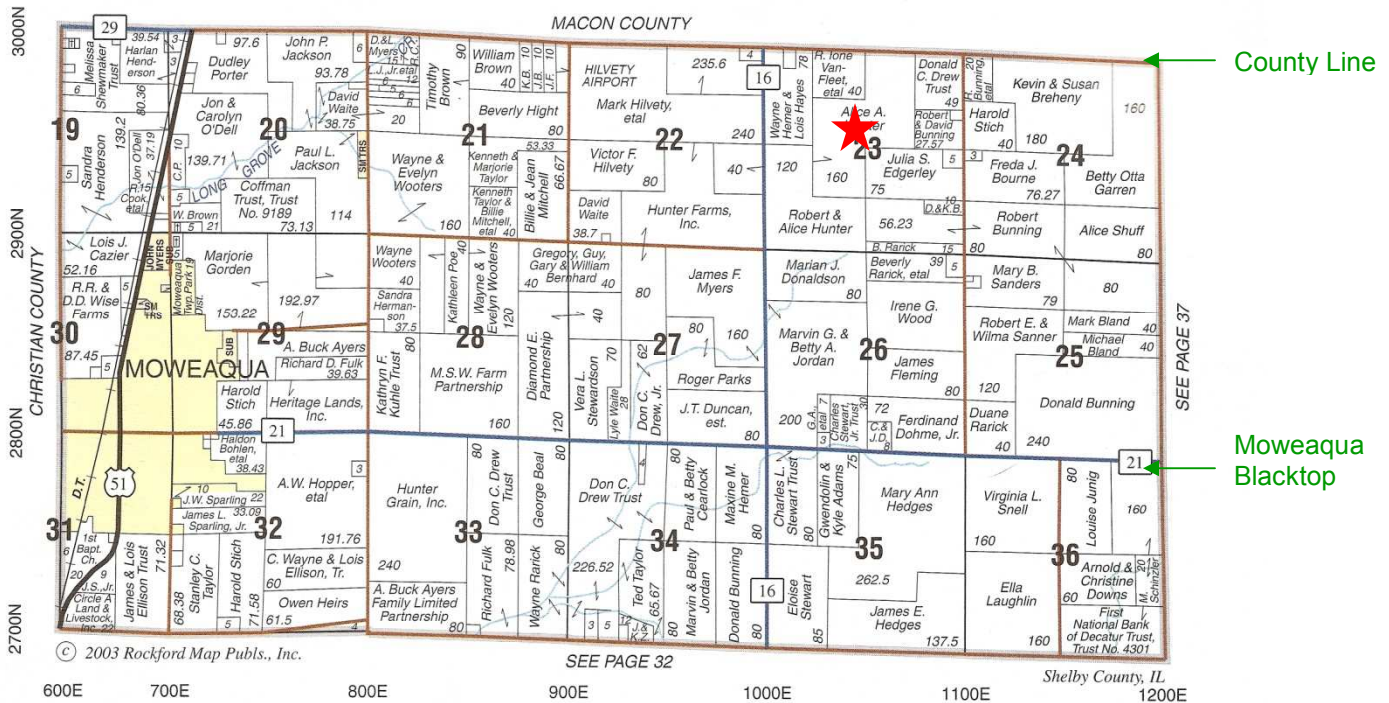
Section: 23

County: Shelby

Local Intersection: 3000 N. & between 1000 & 1100 E. (Shelby) or Hilvety Rd (0 N.) & between Jacobs Rd. & Cornthwaite Rd. (Macon)

MOWEAQUA

T.14N.-R.2E.



Directions from Hemer-Hunter Farm:

You are just north of it! Drive south down the lane.

Directions from Moweaqua:

Go east on the Moweaqua Blacktop (2800 N.) 3 miles to 1000 E or the Tower Hill Blacktop. Then go north (left) on 2 miles to Hilvety Rd. (3000 N.) & go east (right) ¾ miles. Turn south (right and travel down the grass lane.) the farm is straight in front of the T running east and west.

Directions from Macon:

Go east on 400 N. for 2 miles to Jacobs Rd. (Tower Hill Blacktop). Turn south (right) & go 4 miles to Hilvety Rd. (0 N. or 3000 N.). Turn east (left) & travel ¾ miles. Turn south (right and travel down the grass lane.) the farm is straight in front of the T running east and west.

Point of Reference:

Behind Bob and Alice Ann Hunter’s house. 1062 E. 3000 N. RD., Moweaqua, IL. South on the lane next to their house.

GPS Coordinates: N 39° 38’ 59” & W 88° 56’ 49”

Farm Name: Clipston 40/New 40

Acreage: 40

Township: Moweaqua

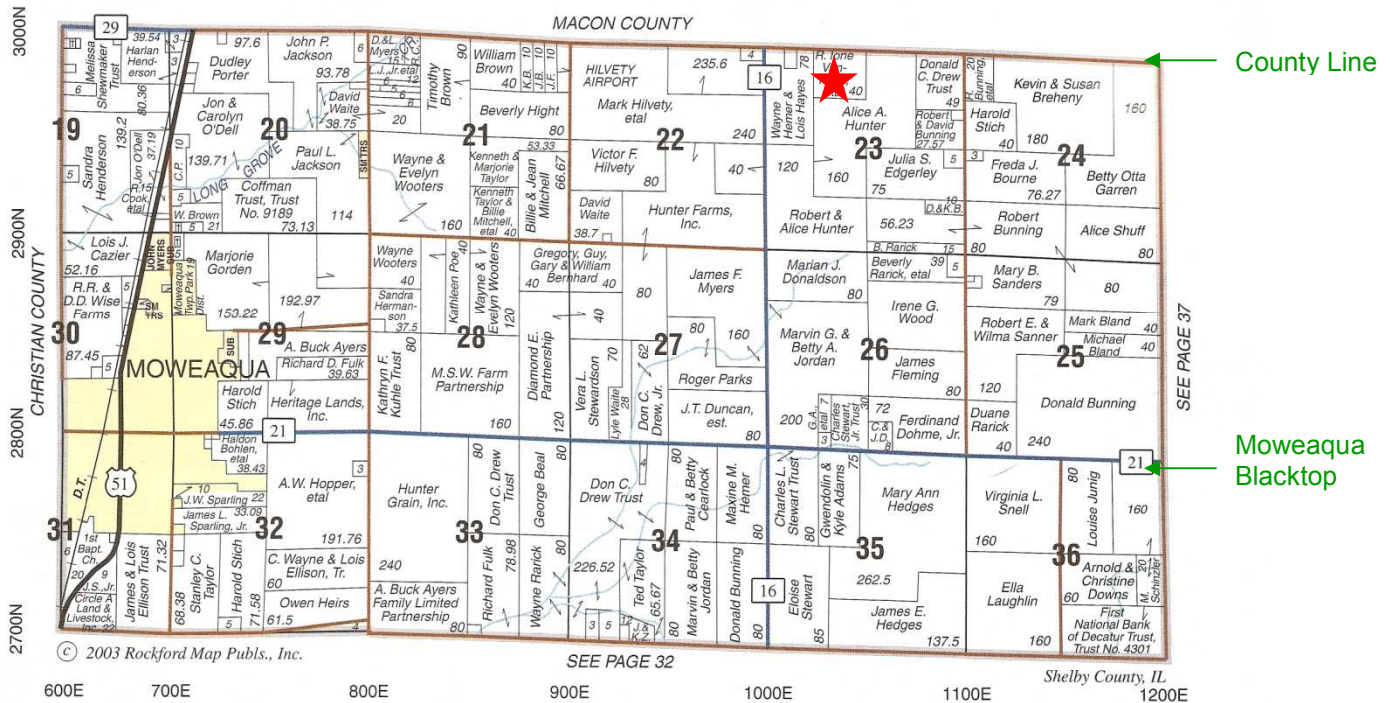
Section: 23

County: Shelby

Local Intersection: 3000 N. & between 1000 & 1100 E. (Shelby) or Hilvety Rd (0 N.) & between Jacobs Rd. & Cornthwaite Rd. (Macon)

MOWEAQUA

T.14N.-R.2E.



Directions from Hemer-Hunter Farm:

You are just east of it! Drive west on the road and it is on the south (left) side.

Directions from Moweaqua:

Go east on the Moweaqua Blacktop (2800 N.) 3 miles to 1000 E or the Tower Hill Blacktop. Then go north (left) on 2 miles to Hilvety Rd. (3000 N.) & go east (right) ½ mile. The farm is on the south (right) side of the road.

Directions from Macon:

Go east on 400 N. for 2 miles to Jacobs Rd. (Tower Hill Blacktop). Turn south (right) & go 4 miles to Hilvety Rd. (0 N. or 3000 N.). Turn east (left) & travel ½ mile. The farm is on the south (right) side of the road.

Point of Reference:

Just west of Bob and Alice Ann Hunter’s house. 1062 E. 3000 N. RD., Moweaqua, IL

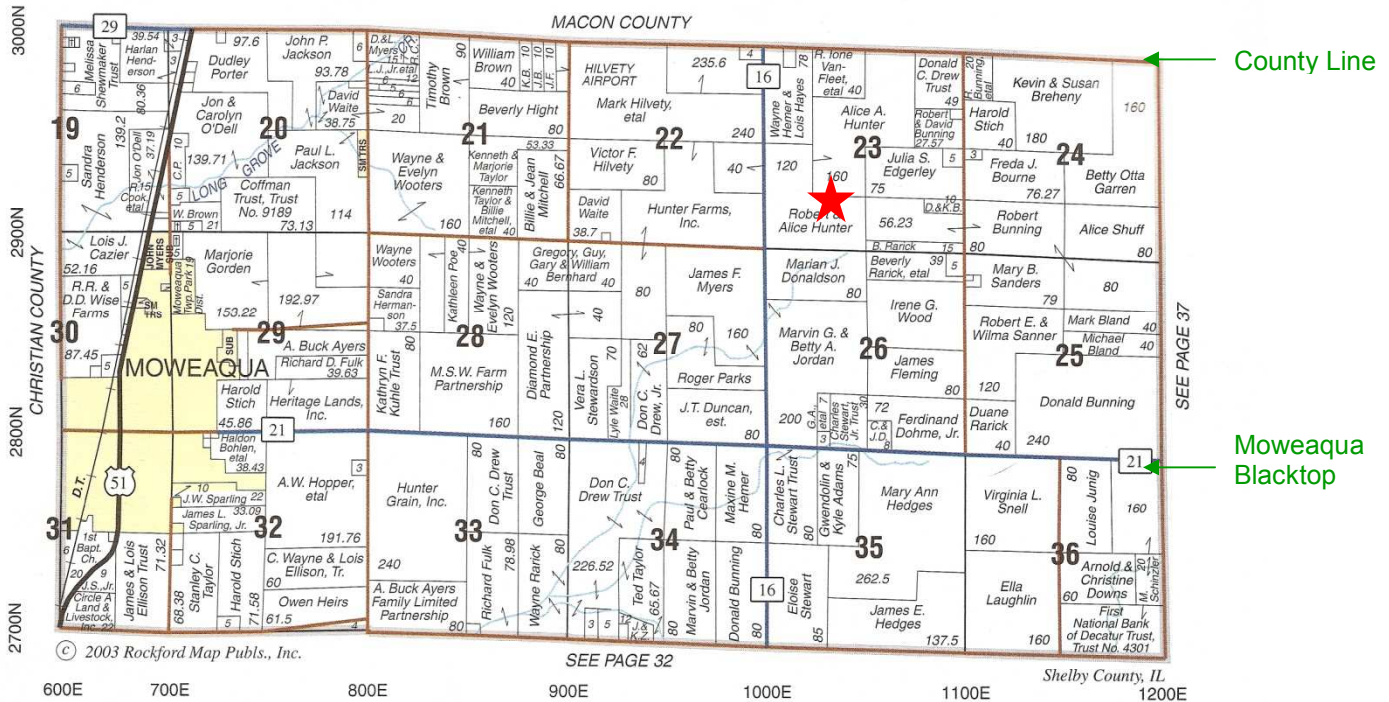
GPS Coordinates: N 39° 39’ 11” & W 88° 57’ 4”

Farm Name: Back 80
Township: Moweaqua
Local Intersection: 2900 N & 1000 E.

Acreage: 80
County: Shelby

MOWEAQUA

T.14N.-R.2E.



Directions from Hemer-Hunter Farm:

Go west on Hilvety Rd. (3000 N.) ³/₄ mile to the Tower Hill Blacktop (1000 E.). Go south (left) ¹/₂ mile & turn east (left) at the grass lane. Travel ¹/₄ mile and it is to southeast of you.

Directions from Moweaqua:

Head east on the Moweaqua Blacktop (2800 N.) for 3 miles to 1000 E. Turn north (left) & travel 1 mile to 2900 N. Travel ¹/₄ mile north of this intersection and take the grass lane to the east (right) ¹/₄ mile and it is to southeast of you.

Point of Reference:

¹/₂ mile north of Marvin Jordan's place on east side of road. 2842 N 1000 E Rd, Moweaqua, IL and east down the lane to the back.

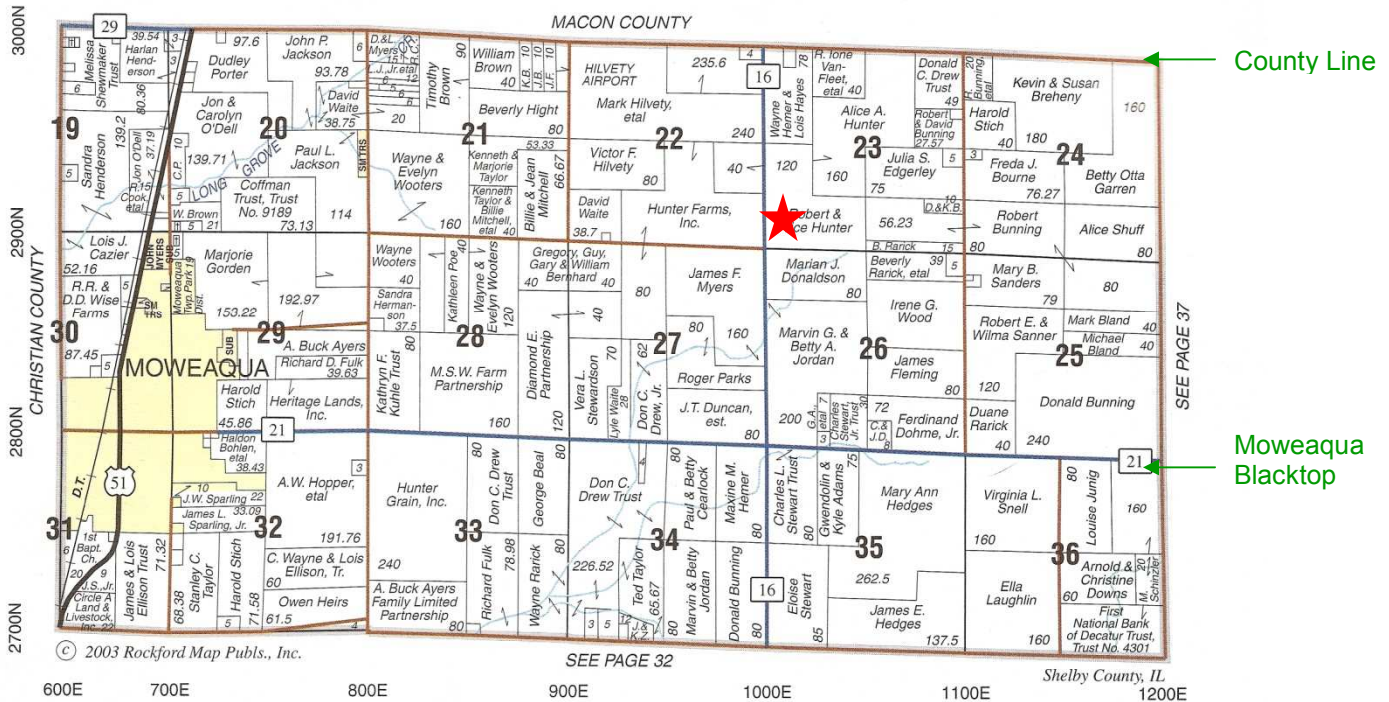
GPS Coordinates: N 39° 38' 45" & W 88° 57' 13"

Farm Name: McGraph 80
Township: Moweaqua
Local Intersection: 2900 N & 1000 E.

Acreage: 80
County: Shelby

MOWEAQUA

T.14N.-R.2E.



Directions from Hemer-Hunter Farm:

Go west on Hilvety Rd. (3000 N.) ³/₄ mile to the Tower Hill Blacktop (1000 E.). Turn south (left) on the grass lane and it is the farm on your right.

Directions from Moweaqua:

Head east on the Moweaqua Blacktop (2800 N.) for 3 miles to 1000 E. Turn north (left) & travel 1 mile to 2900 N. This farm is just to the northeast of this T intersection.

Point of Reference:

¹/₄ mile north of Marvin Jordan’s place on east side of road. 2842 N 1000 E Rd, Moweaqua, IL

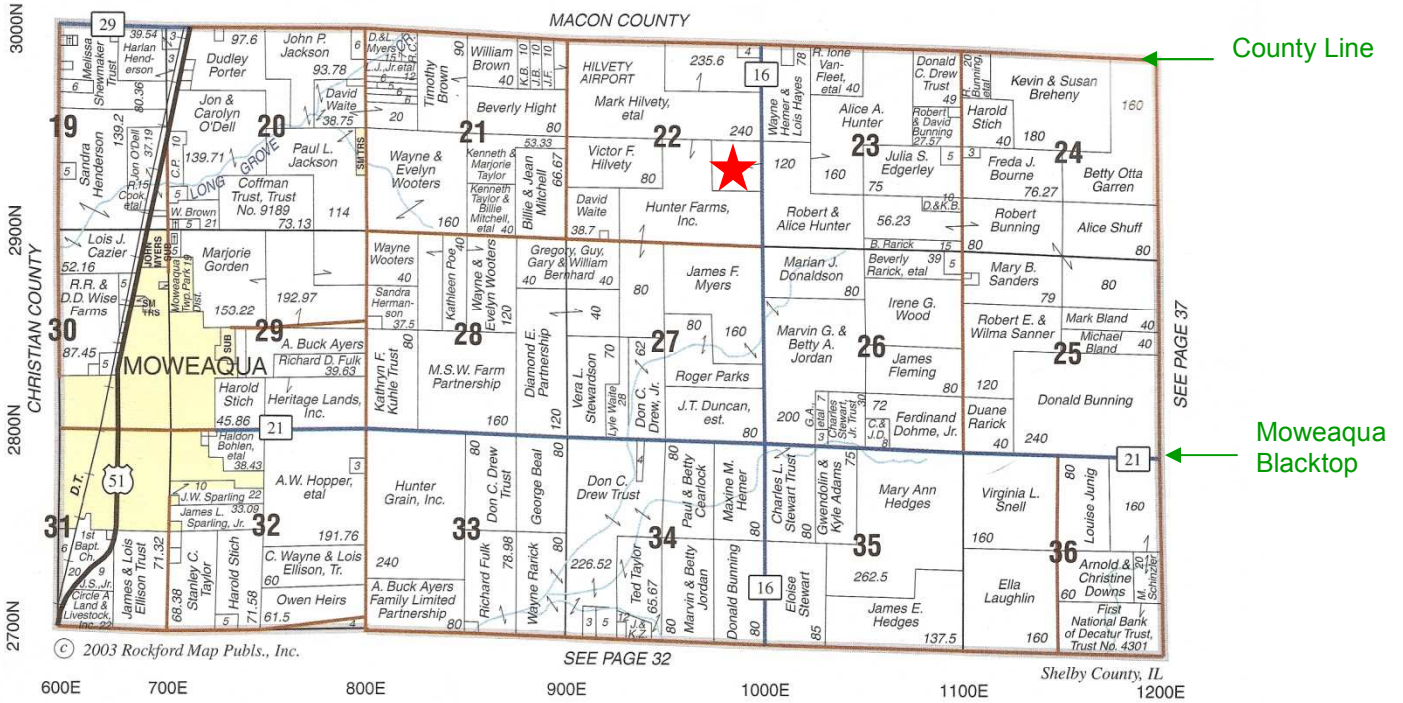
GPS Coordinates: N 39° 38’ 20” & W 88° 57’ 30”

Farm Name: Larson
Township: Moweaqua
Local Intersection: 2900 N & 1000 E.

Acreage: 40
Section: 22
County: Shelby

MOWEAQUA

T.14N.-R.2E.



Directions from Hemer-Hunter Farm:

Go west on Hilvety Rd. (3000 N.) $\frac{3}{4}$ mile to the Tower Hill Blacktop (1000 E.). Go south (left) $\frac{1}{2}$ mile & the farm is on the west (right) side of the road.

Directions from Moweaqua:

Head east on the Moweaqua Blacktop (2800 N.) for 3 miles to 1000 E. Turn north (left) & travel 1 mile to 2900 N. The farm is just $\frac{1}{4}$ mile north of the northwest corner of the intersection.

Point of Reference:

$\frac{1}{4}$ mile north of Marvin Jordan's place on west side of road. 2842 N 1000 E Rd, Moweaqua, IL

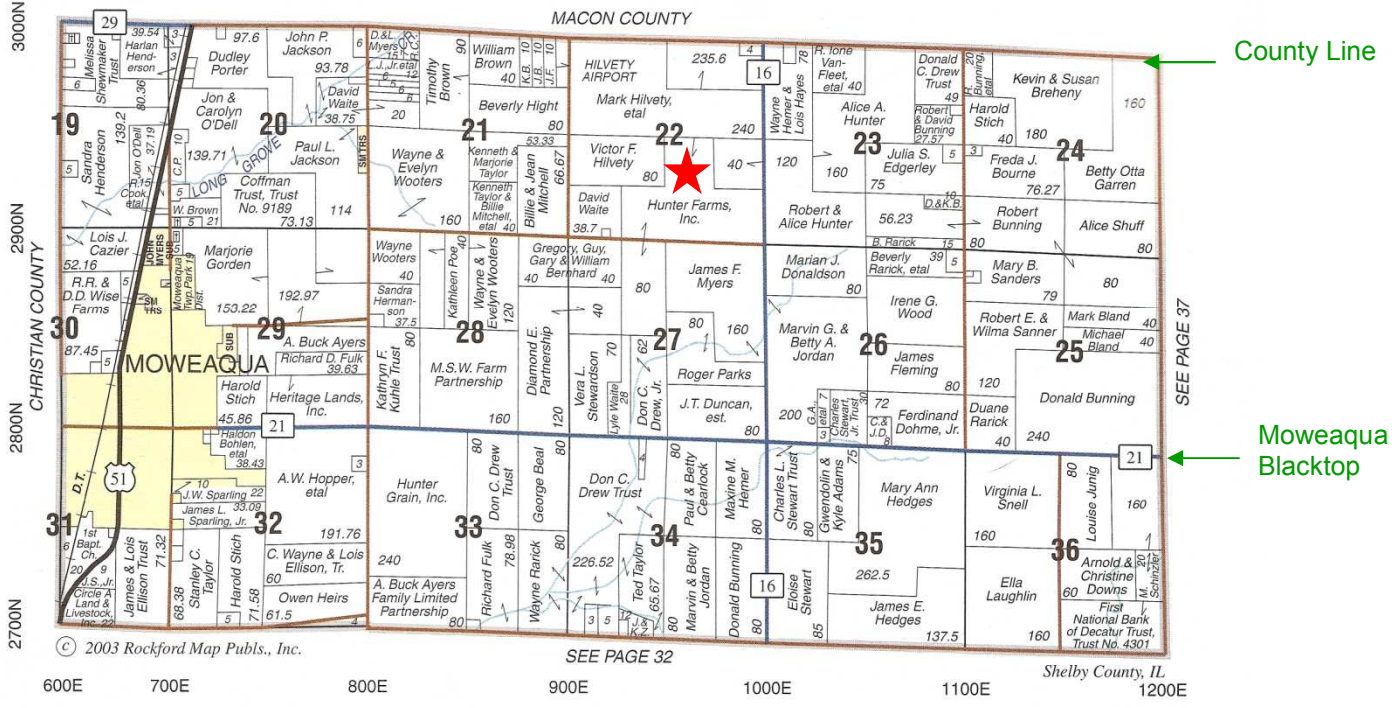
GPS Coordinates: N 39° 38' 40" & W 88° 57' 31"

Farm Name: Ditchy 40
Township: Moweaqua
Local Intersection: 2900 N & 1000 E.

Section: 22
County: Shelby

MOWEAQUA

T.14N.-R.2E.



Directions from Hemer-Hunter Farm:

Go west on Hilvety Rd. (3000 N.) ¾ mile to the Tower Hill Blacktop (1000 E.). Go south (left) 1 mile & turn west (right) on 2900 N. Travel west ¼ mile & take the grass lane to the north (right) down into the field.

Directions from Moweaqua:

Head east on the Moweaqua Blacktop (2800 N.) for 3 miles. Turn north (left) at the Tower Hill Blacktop (1000 E.) & travel 1 mile to 2900 N. Turn back west (left) for & travel ¼ mile & take the grass lane to the north (right) down into the field.

Point of Reference:

Near Scott Rowcliffe's house.
 Scott Rowcliff: 922 E. 2900 N. Rd., Moweaqua, IL

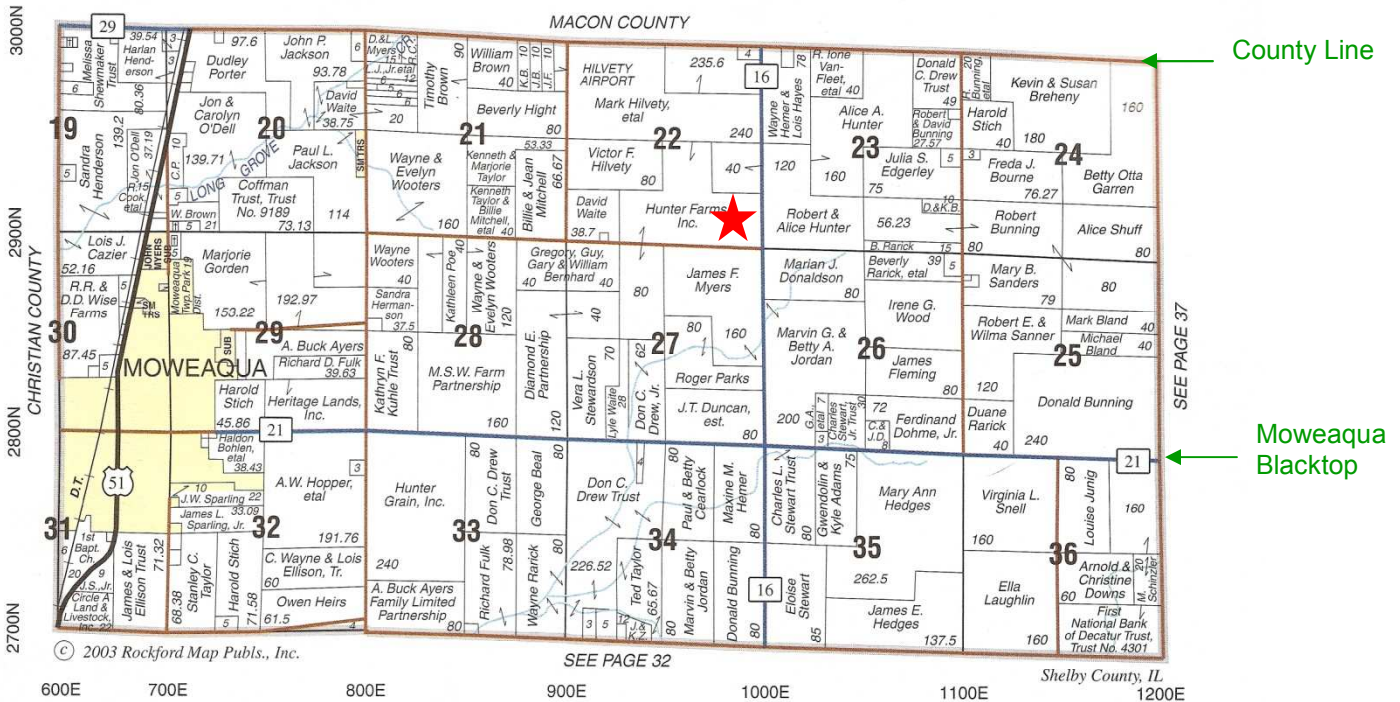
GPS Coordinates: N 39° 38' 34" & W 88° 57' 48"

Farm Name: Corner 40
Township: Moweaqua
Local Intersection: 2900 N. & 1000 E.

Section: 22
County: Shelby

Acreage: 40
T.14N.-R.2E.

MOWEAQUA



Directions from Hemer-Hunter Farm:

Go west on Hilvety Rd. (3000 N.) $\frac{3}{4}$ mile to the Tower Hill Blacktop (1000 E.). Go south (left) 1 mile & turn west (right) on 2900 N. The farm is located on the northwest corner of this intersection. You can travel $\frac{1}{4}$ mile west (right) to a lane to get into the field.

Directions from Moweaqua:

Head east on the Moweaqua Blacktop (2800 N.) for 1 mile. Turn north (left) at the 800 E. & travel 1 mile to 2900 N. Turn east (right) for $1\frac{3}{4}$ to 2 miles. The farm is on the north (left) side of the road.

Point of Reference:

Just northeast of Scott Rowcliff: 922 E. 2900 N. Rd., Moweaqua, IL

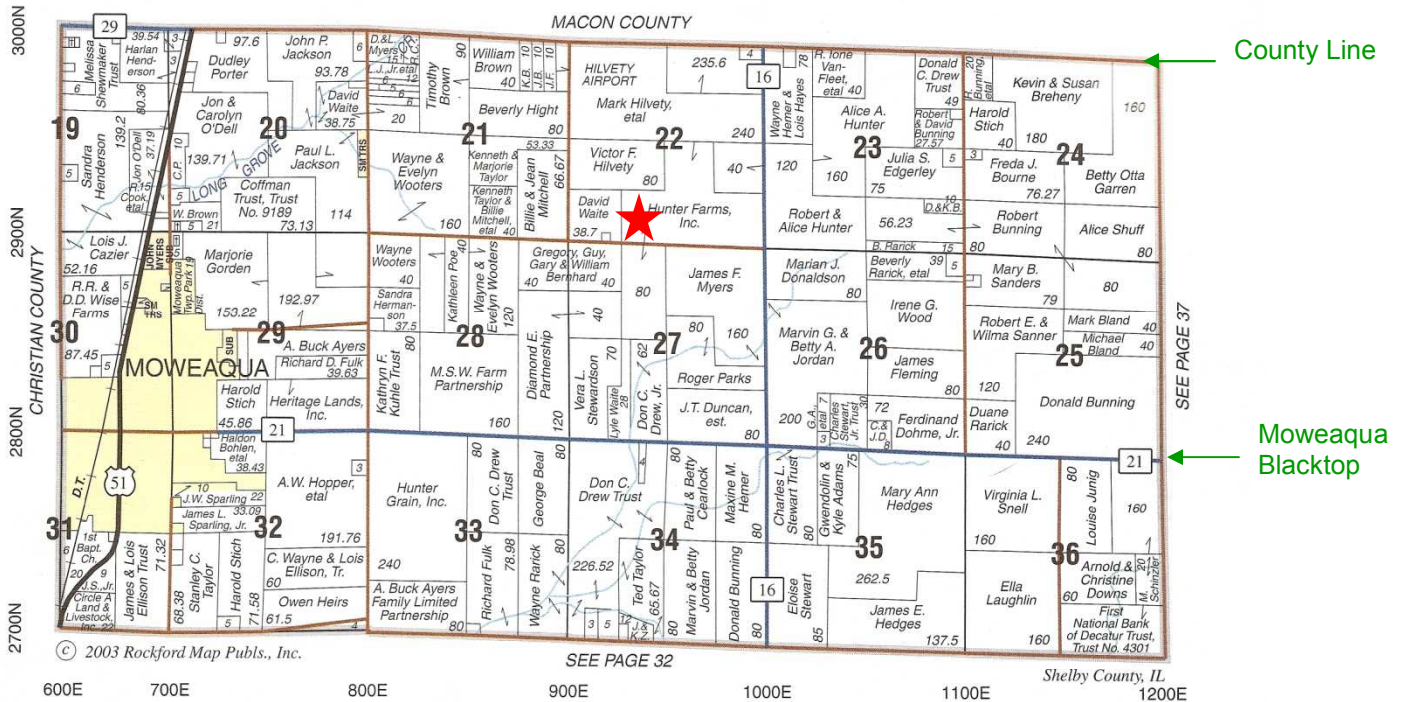
GPS Coordinates: N 39° 38' 20" & W 88° 57' 31"

Farm Name: North 80
Township: Moweaqua
Local Intersection: 2900 N. & 1000 E.

Section: 22
County: Shelby

MOWEAQUA

T.14N.-R.2E.



Directions from Hemer-Hunter Farm:

Go west on Hilvety Rd. (3000 N.) ³/₄ mile to the Tower Hill Blacktop (1000 E.). Go south (left) 1 mile & turn west (right) on 2900 N. The west (right) and travel ¹/₄ mile to a grass lane to the north. This farm is just west of the lane.

Directions from Moweaqua:

Head east on the Moweaqua Blacktop (2800 N.) for 1 mile. Turn north (left) at 800 E. & travel 1 mile to 2900 N. Turn east (right) and travel for 1 ¹/₂ miles. The farm is on the north (left) side of the road.

Point of Reference:

Just north across from Scott Rowcliff: 922 E. 2900 N. Rd., Moweaqua, IL

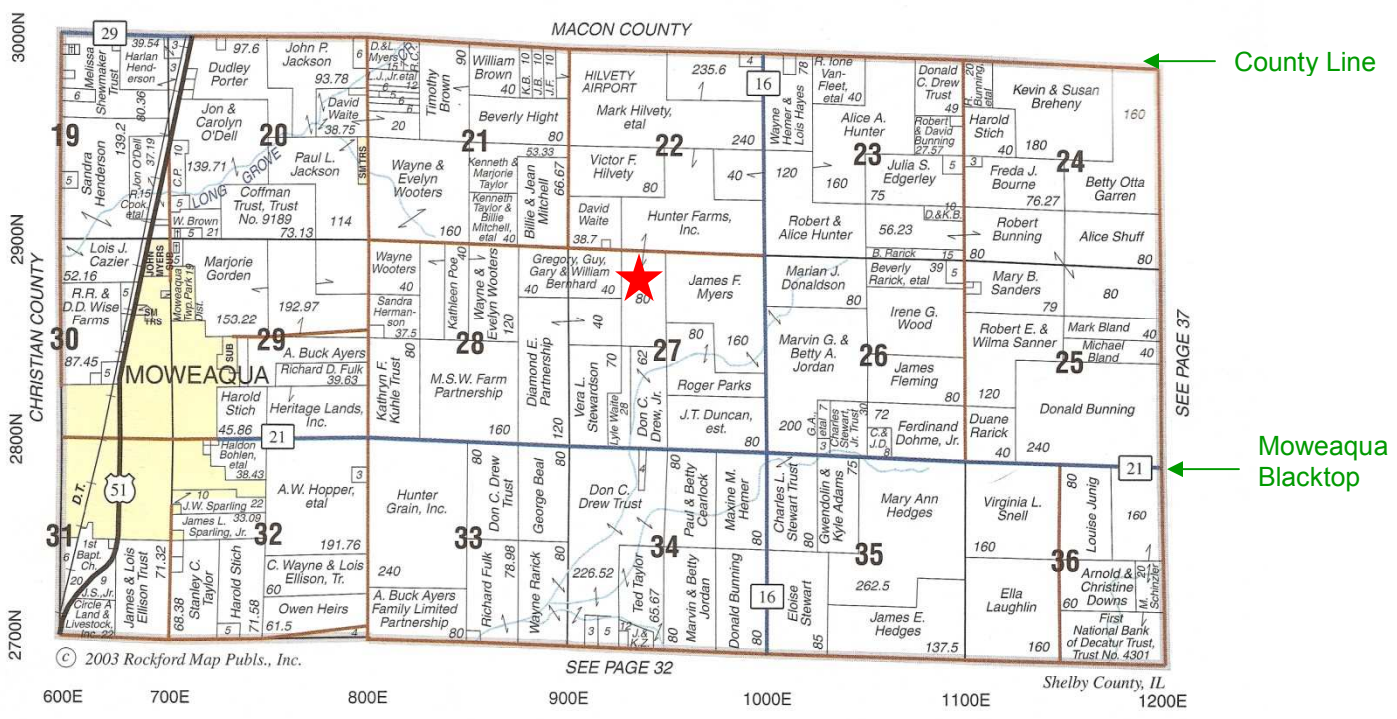
GPS Coordinates: N 39° 38' 21" & W 88° 57' 49"

Farm Name: South 80/Scott's Place
Township: Moweaqua
Local Intersection: 2900 N & 1000 E.

Section: 27
Acreage: 80
County: Shelby

MOWEAQUA

T.14N.-R.2E.



Directions from Hemer-Hunter Farm:

Go west on Hilvety Rd. (3000 N.) ¾ mile to the Tower Hill Blacktop (1000 E.). Go south (left) 1 mile & turn west (right) on 2900 N. Travel west ½ mile & the farm is on the south (left) side of the road.

Directions from Moweaqua:

Head east on the Moweaqua Blacktop (2800 N.) for 1 mile. Turn north (left) at the 800 E. & travel 1 miles to 2900 N. Turn east (right) for 1 ½ mile. The farm is on the south (right) side of the road.

Point of Reference:

Scott Rowcliff: 922 E. 2900 N. Rd., Moweaqua, IL

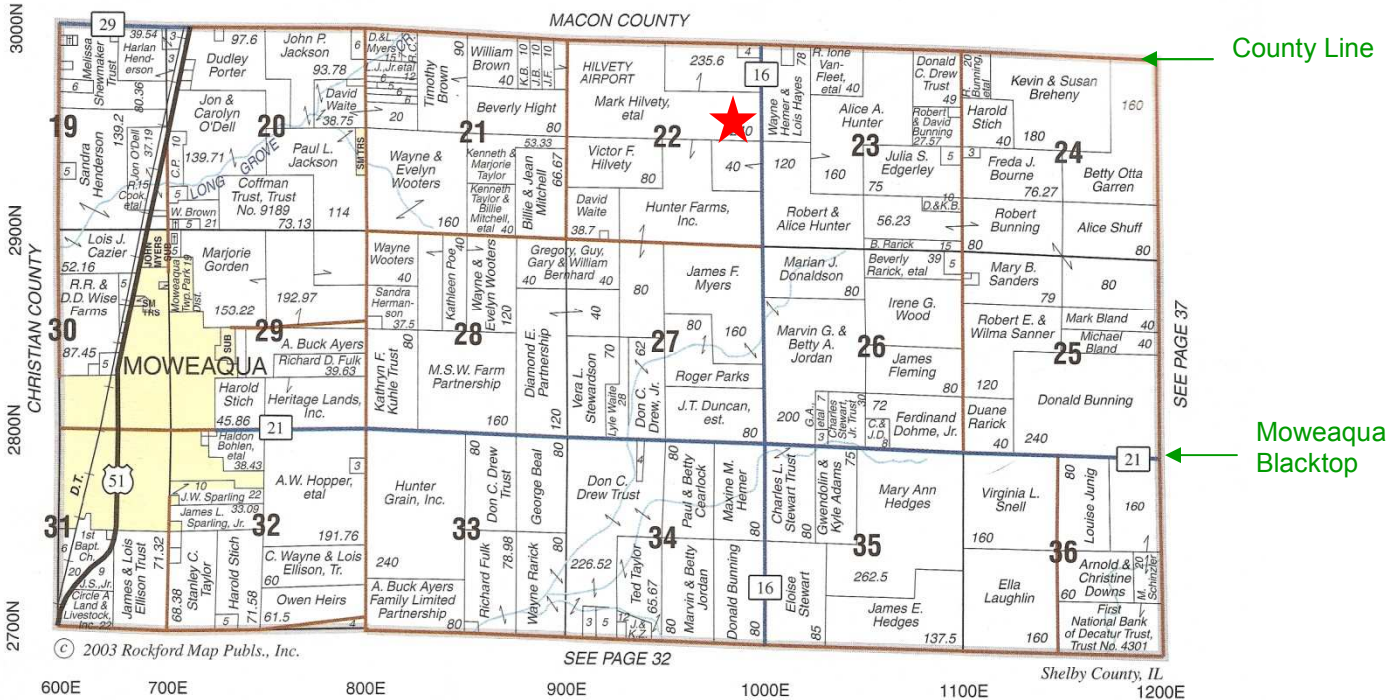
GPS Coordinates: N 39° 38' 21" & W 88° 58' 21"

Farm Name: Hilvety 80
Township: Moweaqua
Local Intersection: 3000 N & 1000 E.

Section: 22
County: Shelby

MOWEAQUA

T.14N.-R.2E.



Directions from Hemer-Hunter Farm:

Go west on Hilvety Rd. (3000 N.) ¾ mile to the Tower Hill Blacktop (1000 E.). Go south (left) ¼ mile & the farm is on the west (right) side of the road.

Directions from Moweaqua:

Head east on the Moweaqua Blacktop (2800 N.) for 3 miles to 1000 E. Turn north (left) & travel 1 mile to 2900 N. The farm is just ½ mile north of the northwest corner of the intersection.

Point of Reference:

South of Mike Border’s House. 2998 N. 1000 E. Rd., Moweaqua, IL

GPS Coordinates: N 39° 38’ 51” & W 88° 57’ 38”

Farm Name: Clipston 76/Borders'

Acreage: 75.6

Township: Moweaqua

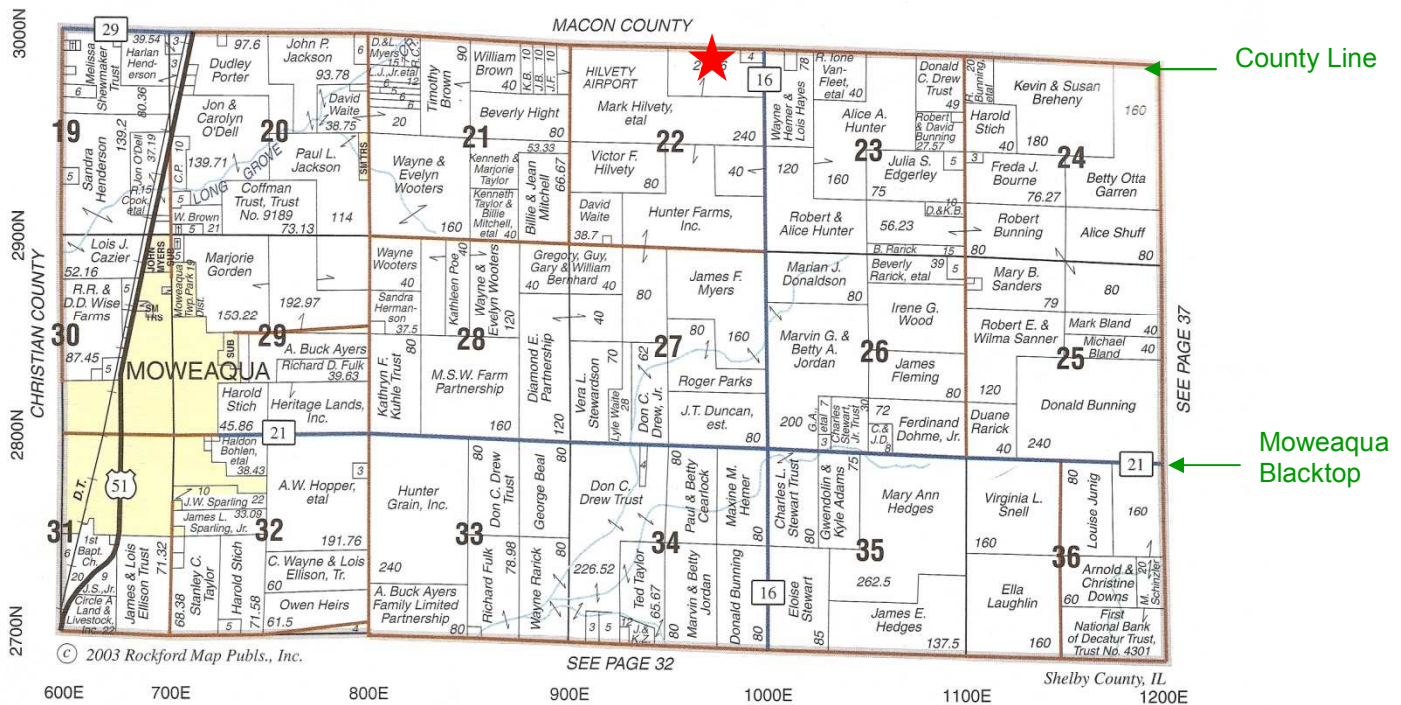
Section: 22

County: Shelby

Local Intersection: 3000 N. & 1000 E. (Shelby) or Hilvety Rd. & Jacobs Rd. (Macon)

MOWEAQUA

T.14N.-R.2E.



Directions from Hemer-Hunter Farm:

Go west on Hilvety Rd. ¾ mile to the Tower Hill Blacktop (1000 E.) & continue west just past Border's property. The farm is on the south (left) side of the road. You can also turn south (left) on the 1000 E. & go just past Border's house. The field is on the west (right) side of the road.

Directions from Moweaqua:

Head east on the Moweaqua Blacktop (2800 N.) for 3 miles to 1000 E. Turn north (left) & travel nearly 1 ¾ to 2 miles. The field is on the west (left) side of the road.

Directions from Macon:

Go east on 400 N. for 2 miles to Jacobs Rd. (Tower Hill Blacktop). Turn south (right) & go 4 miles to Hilvety Rd. (0 N. or 3000 N.). Turn west (right) & continue west just past Border's property. The farm is on the south (left) side of the road. You can also turn south (left) on the 1000 E. & go just past Border's house. The field is on the west (right) side of the road.

Point of Reference:

Mike Borders' House is surrounded by the field. 2998 N. 1000 E. Rd., Moweaqua, IL

GPS Coordinates: N 39° 39' 07" & W 88° 57' 32"

Farm Name: Hemer-Hays Ground

Acreage: 78

Township: Moweaqua

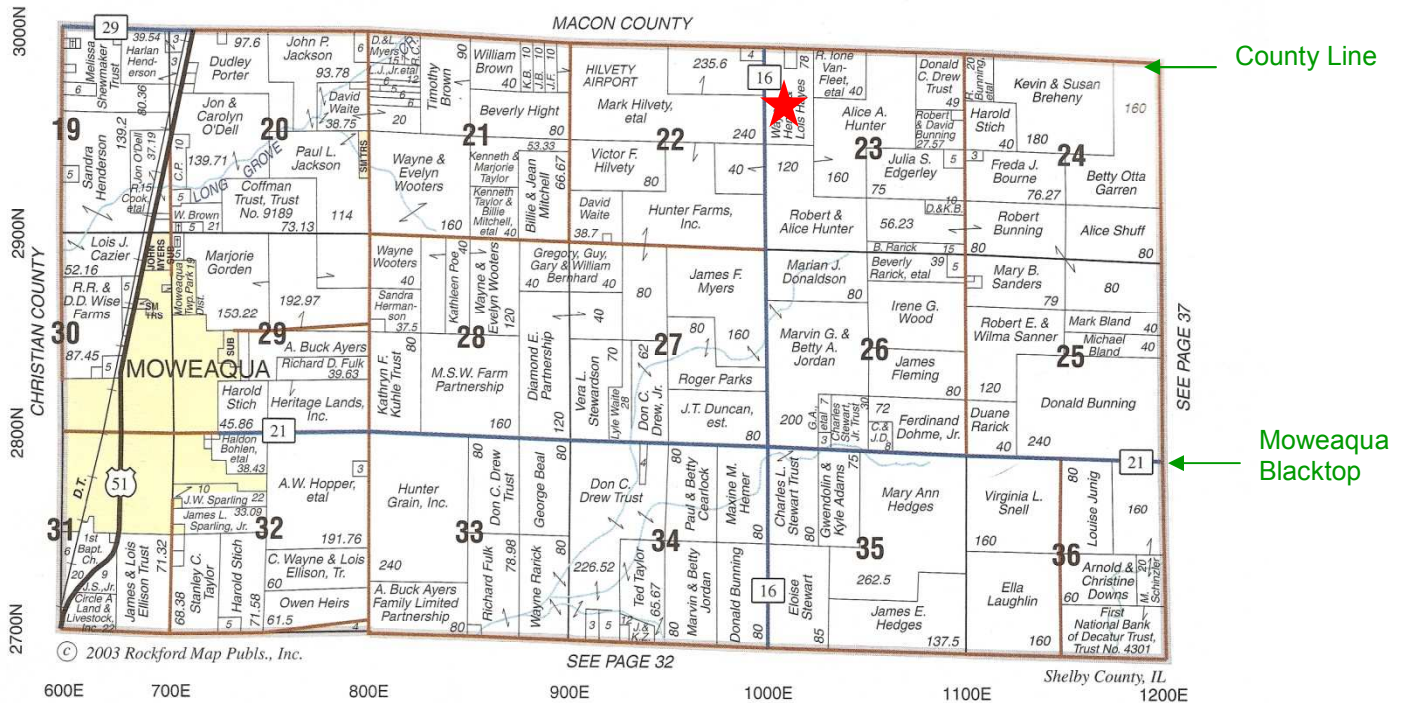
Section: 23

County: Shelby

Local Intersection: 3000 N. & 1000 E. (Shelby) or Hilvety Rd. & Jacobs Rd. (Macon)

MOWEAQUA

T.14N.-R.2E.



Directions from Hemer-Hunter Farm:

Go west on Hilvety Rd. 1/2 to 3/4 mile. The field is on the south (left) side of the road & surrounds the house.

Directions from Moweaqua:

Head east on the Moweaqua Blacktop (2800 N.) for 3 miles to 1000 E. Turn north (left) & travel nearly 1 3/4 to 2 miles. The field is on the west (left) side of the road.

Directions from Macon:

Go east on 400 N. for 2 miles to Jacobs Rd. (Tower Hill Blacktop). Turn south (right) & go 4 miles to Hilvety Rd. (0 N. or 3000 N.). The field is located on the southeast corner of this intersection.

Point of Reference:

East of Mike Border's House. 2998 N. 1000 E. Rd., Moweaqua, IL

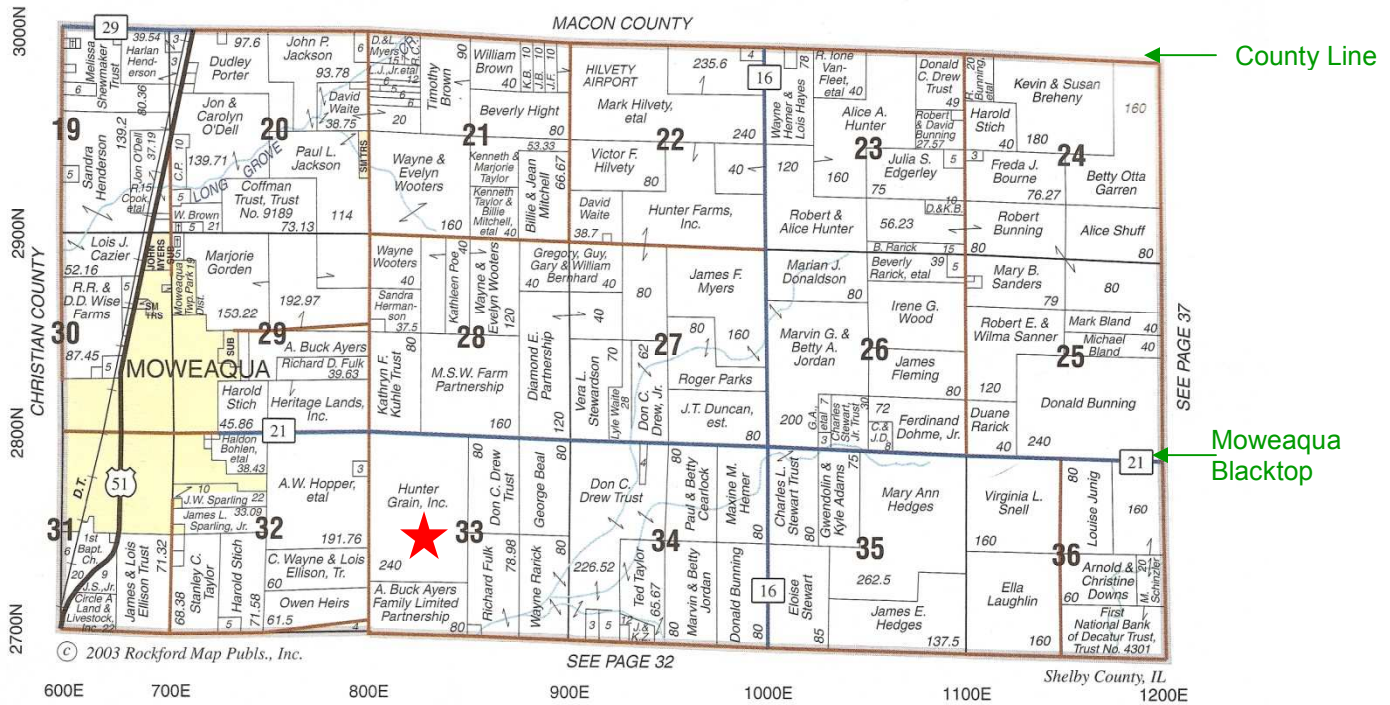
GPS Coordinates: N 39° 39' 12" & W 88° 57' 31"

Farm Name: Cook Farm
Township: Moweaqua
Local Intersection: 2800 N. & 800 E.

Section: 33
Acreage: 240
County: Shelby

MOWEAQUA

T.14N.-R.2E.



Directions from Hemer-Hunter Farm:

Go west on Hilvety Rd. or 3000 N ¾ mile to the Tower Hill Blacktop (1000 E.). Turn south (left) & travel 2 miles to the Moweaqua Blacktop (2800 N.). Turn west (right) & travel 1 ¾ miles. This farm is located on south side of the road & the main fields are located on the southeast corner of 2800 N. & 800 E.

Directions from Moweaqua:

Head east on the Moweaqua Blacktop for 1 ¼ miles. This farm is located on south side of the road & the main fields are located on the southeast corner of 2800 N. & 800 E.

Point of Reference:

SuEllen Mackey’s house is part of this property. 822 E. 2800 N. Rd., Moweaqua, IL

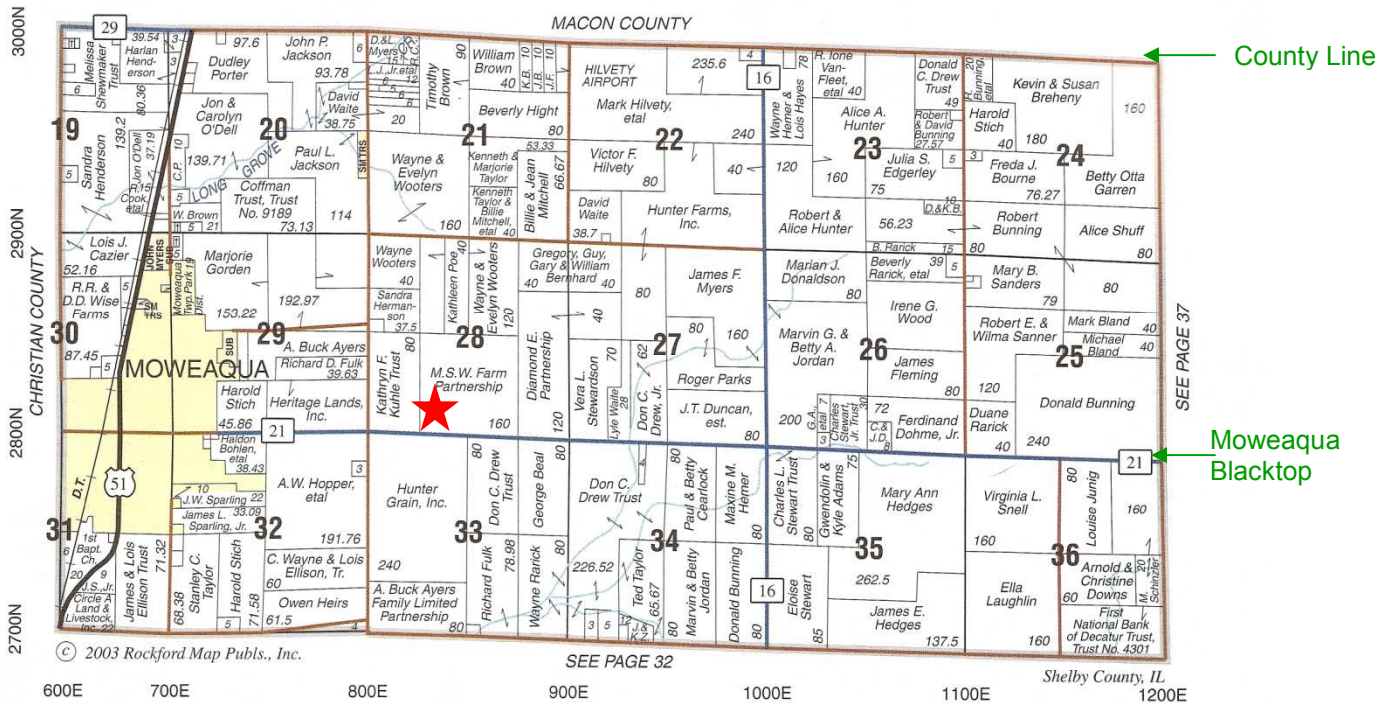
GPS Coordinates: N 39° 37’ 29” & W 88° 59’ 29”

Farm Name: Orris Farm
Township: Moweaqua
Local Intersection: 2800 N. & 800 E.

Section: 28
County: Shelby

MOWEAQUA

T.14N.-R.2E.



Directions from Hemer-Hunter Farm:

Go west on Hilvety Rd. or 3000 N ¾ mile to the Tower Hill Blacktop (1000 E.). Turn south (left) & travel 2 miles to the Moweaqua Blacktop (2800 N.). Turn west (right) & travel 1 ¼ miles. This farm is located on north side of the road.

Directions from Moweaqua:

Head east on the Moweaqua Blacktop for 1 ¼ miles. This farm is located on north side of the road.

Point of Reference:

SuEllen Mackey’s house is just south of this field. 822 E. 2800 N. Rd., Moweaqua, IL

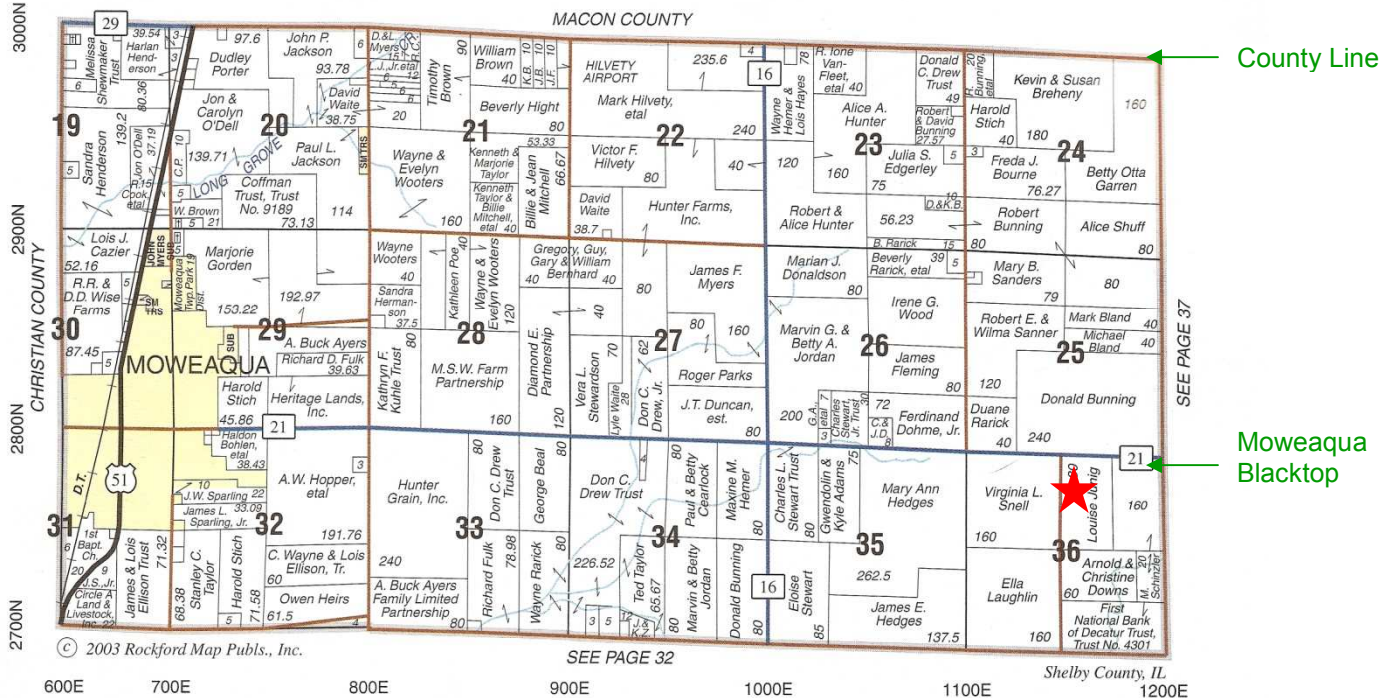
GPS Coordinates: N 39° 37’ 39” & W 88° 58’ 51”

Farm Name: 80/Downs/Louise's Farm
Township: Moweaqua
Local Intersection: 2800 N. & 1150 E.

Section: 36
County: Shelby

MOWEAQUA

T.14N.-R.2E.



Directions from Hemer-Hunter Farm:

Go east on Hilvety Rd. or 3000 N to 1100 E or Cornthwaite Rd. Turn south (right) & travel 2 miles to the Moweaqua Blacktop (2800 N.). Turn east (left) & travel ½ mile. This farm is located on southeast corner of 2800 N. & 1150 E.

Directions from Moweaqua:

Head east on the Moweaqua Blacktop (2800 N.) for 4.5 miles. This farm is located on southeast corner of 2800 N. & 1150 E.

Point of Reference:

Just north of Duane Downs' house. 2750 N. 1150 E. Rd., Moweaqua, IL

GPS Coordinates: N 39° 37' 25" & W 88° 55' 47"

Farm Name: Weck Farm

Acreage: 288.12

Township: Penn

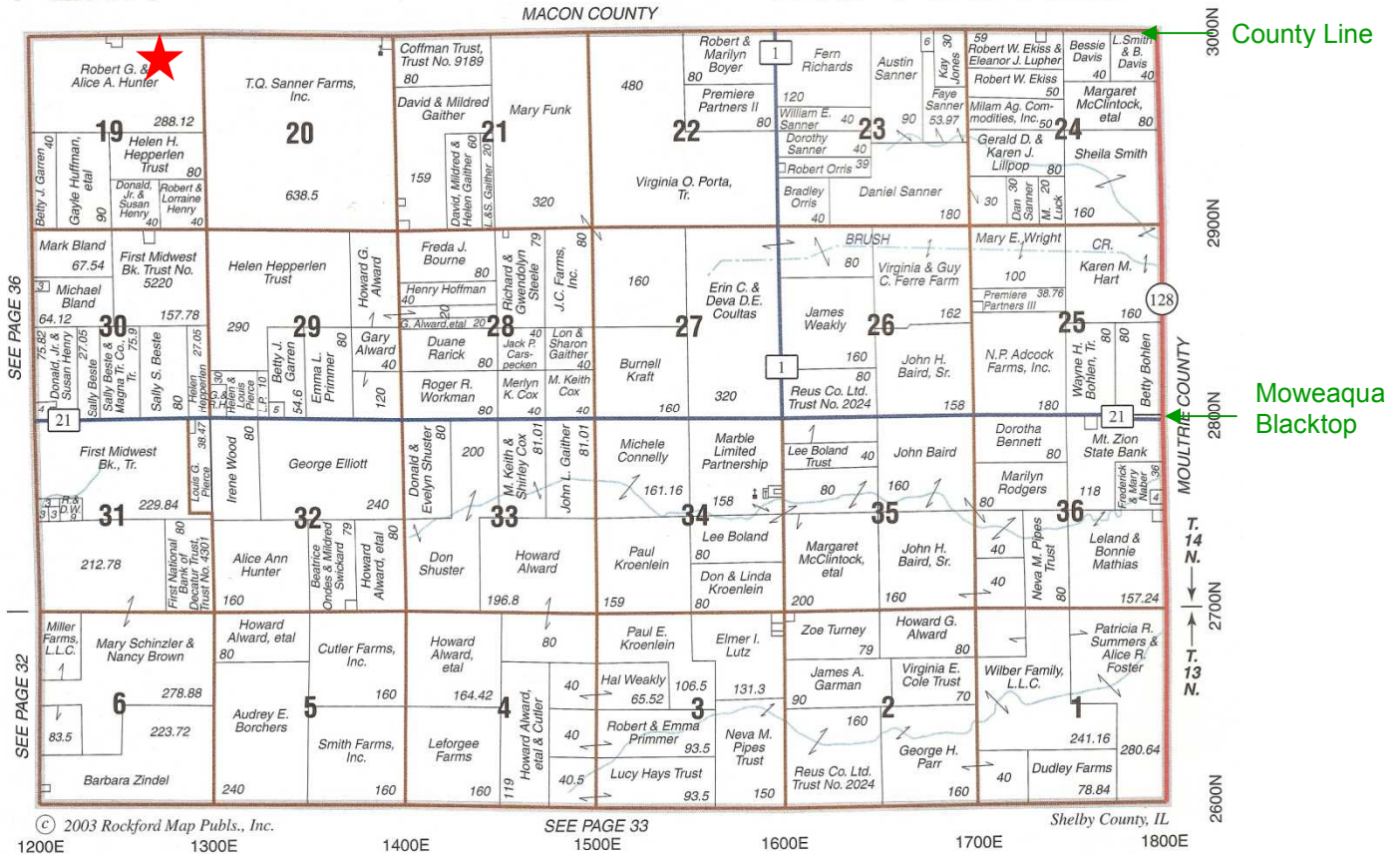
Section: 19

County: Shelby

Local Intersection: 3000 N. & 1200 E.

PENN

T.13-14N.-R.3E.



Directions from Hemer-Hunter Farm:

Go east on the Hilvety Rd. (3000 N.) 1 ¼ miles. This farm is on the south (right) side of road & runs the full mile. You can enter on either the west or east side of the Dawkin’s property.

Directions from Moweaqua:

Head east on the Moweaqua Blacktop (2800 N.) for 5 miles. Turn north (left) at 1200 E. & travel 2 miles to Hilvety Rd. (3000 N.) Turn east (right) & this field runs along the south (right) side of the road for the entire section.

Point of Reference:

This field surrounds Brett Dawkin’s place or southeast of Brian Powell’s house. 1244 E 3000 N Rd, Moweaqua, IL

GPS Coordinates: N 39° 39’ 09” & W 88° 54’ 47”

Farm Name: Field Across the Road

Acreage: 50

Township: South Macon

Section: 14

County: Macon

Local Intersection: 3000 N. & between 1000 & 1100 E. (Shelby) or Hilvety Rd (0 N.) & between Jacobs Rd. & Cornthwaite Rd. (Macon)

SOUTH MACON T 14-15 N-R. 2 E.



Directions from Hemer-Hunter Farm:

You are across from it!

Directions from Moweauqua:

Go east on the Moweauqua Blacktop (2800 N.) 3 miles to 1000 E or the Tower Hill Blacktop. Then go north (left) on 2 miles to Hilvety Rd. (3000 N.) & go east (right) ¾ miles. They farm is on the north (left) side of the road.

Directions from Macon:

Go east on 400 N. for 2 miles to Jacobs Rd. (Tower Hill Blacktop). Turn south (right) & go 4 miles to Hilvety Rd. (0 N. or 3000 N.). Turn east (left) & travel ¾ miles. The farm is on the north (left) side of the road.

Point of Reference:

Across from 1062 E 3000 N RD., Moweauqua, IL

GPS Coordinates: N 39° 39' 12" & W 88° 56' 43"

Farm Name: Cox/Powell

Acreage: 220

Township: South Macon

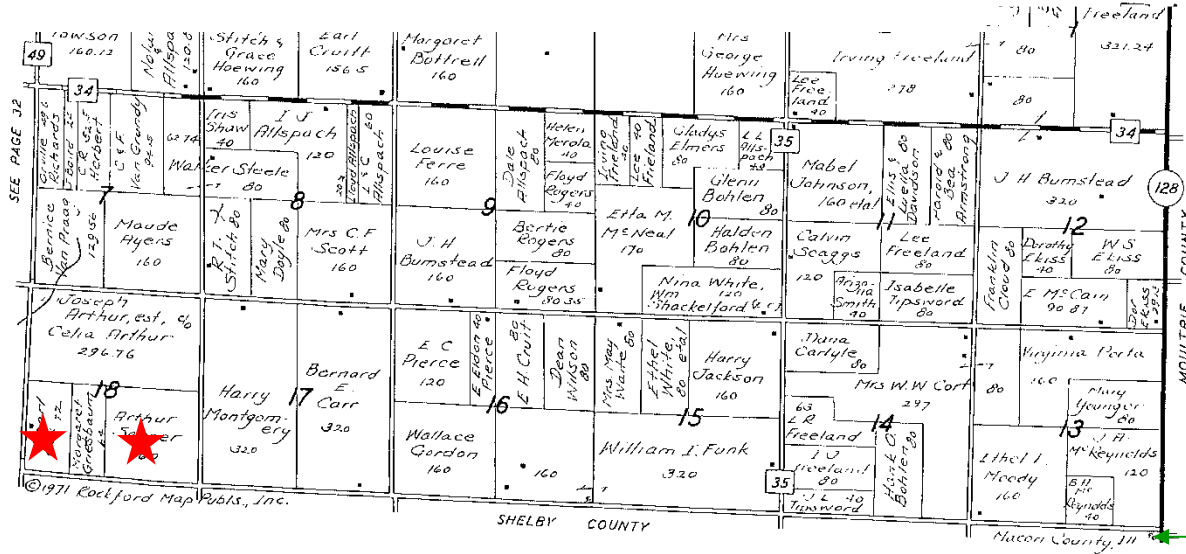
Section: 18

County: Macon

Local Intersection: 3000 N. & 1200 E. (Shelby) or Walmsley Rd. & Hilvety Rd.

MILAM

T. 14-15 N.-R. 3 E.



County Line

Directions from Hemer-Hunter Farm:

Go east on the Hilvety Rd. (3000 N.) 1 ¼ miles. This farm is on the northeast side of the road just past the intersection.

Directions from Moweaqua:

Go east on the Moweaqua Blacktop (2800 N.) for 5 miles. Turn north (left) on 1200 E. & travel 2 miles. Then turn east (right) on Hilvety Rd. (3000 N.) & it is on the north side of the road.

Directions from Macon:

Go east on W. Andrews St. Rd. (400 N.) 4 miles to the Walmsley Rd. (Co. Hwy 49) & go south (right) 4 miles to Hilvety Rd. (3000 N.)

Point of Reference:

This farm is just northwest of Brett Dawkin's place or southeast of Brian Powell's house. 13268 Walmsley Rd., Moweaqua, IL

GPS Coordinates: N 39° 39' 10" & W 88° 55' 16"

Farm Name: Groves

Acreage: 80

Township: Milam

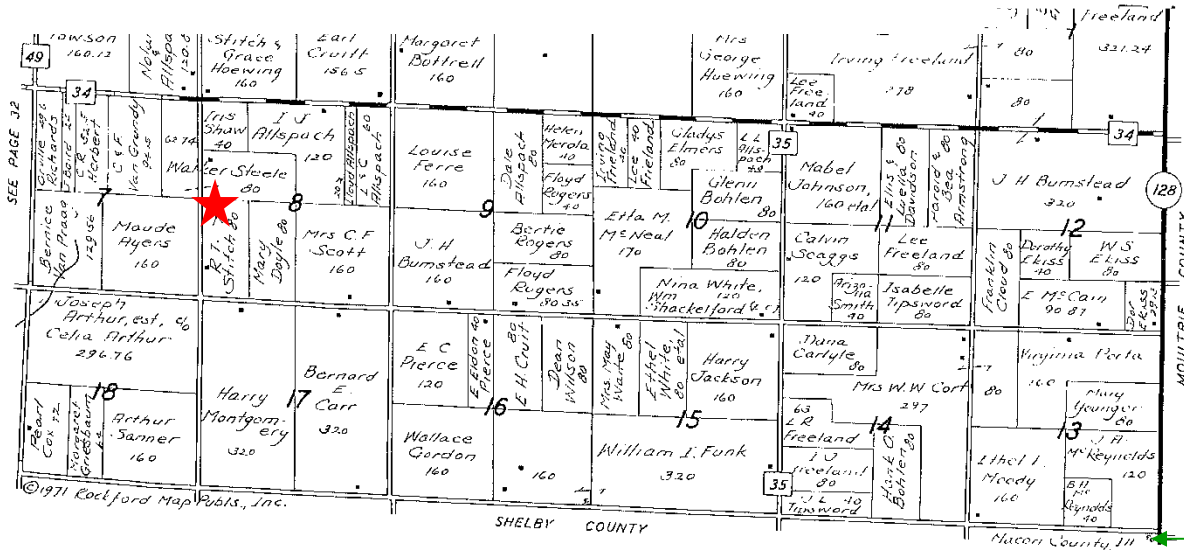
Section: 8

County: Macon

Local Intersection: E. Crosson Rd. & Milam Rd.

MILAM

T. 14-15 N.-R. 3 E.



County Line

Directions from Hemer-Hunter Farm:

Go east on Hilvety Rd. (3000 N) ¼ mile to Cornthwaite Rd. (1100 E.) Turn north (left) & travel 1 mile to E. Crosson Rd. (100 N.). Turn east (right) & travel 2 miles to Milam Rd. (1300 E.). This farm is on the northeast side of the intersection.

Directions from Moweauqua:

Go east on the Moweauqua Blacktop (2800 N.) 5 miles to 1100 E. Turn north (left) & travel 3 miles.

Directions from Macon:

From Hwy 51, travel east on W. Andrews St. Rd. or Co. Hwy 32 3.8 miles to Walmsley Rd. Turn south (right) on Walmsley for 3 miles to Crosson Rd. Turn east (left) & travel 1 mile.

Point of Reference:

One mile south of the Milam Township Shed on the east side of the road.

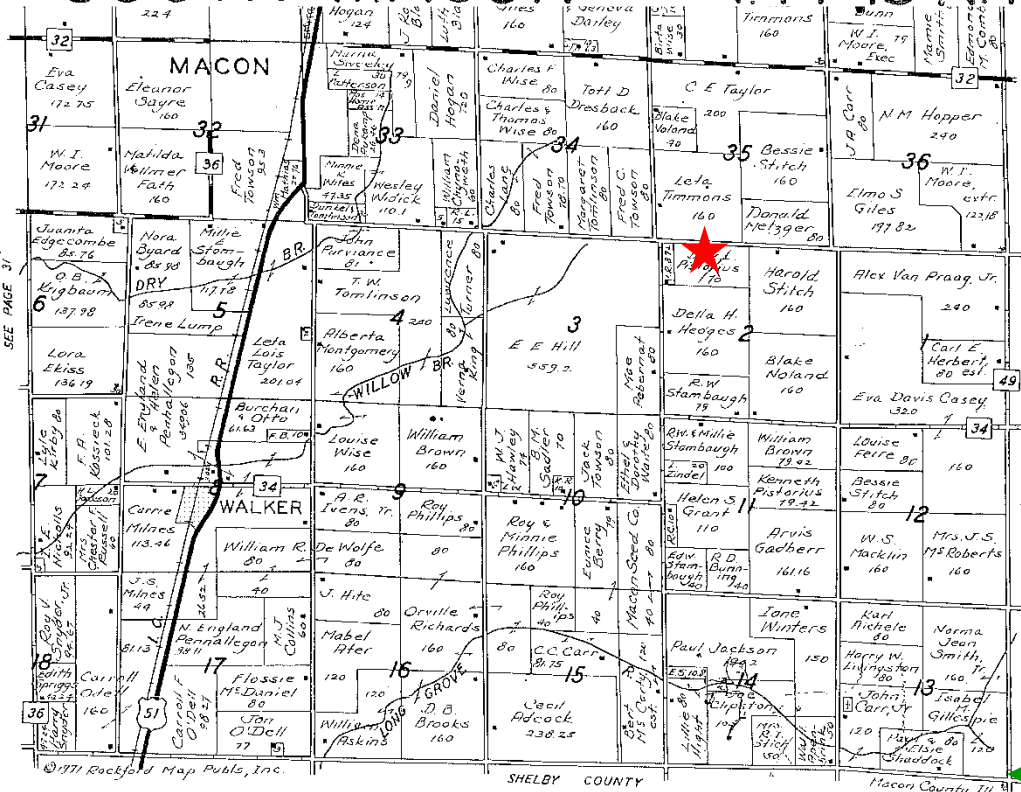
GPS Coordinates: N 39° 40' 03" & W 88° 54' 17"

Farm Name: Doc's
Township: South Macon
Local Intersection: Jacob Rd. & E. Ridlen Rd.

Section: 2
County: Macon

Acreage: 70

SOUTH MACON T. 14-15 N-R. 2 E.



Directions from Hemer-Hunter Farm:

Go west on Hilvety Rd. (3000 N) $\frac{3}{4}$ mile to the Tower Hill Blacktop (1000 E.). Turn north (right) & travel 3 miles. Turn east (right) on E. Ridlen Rd. (300 N.). This farm is right past the pasture on the south side of the road.

Directions from Moweauqua:

Go east on the Moweauqua Blacktop (2800 N.) for 3 miles to the Tower Hill Blacktop (1000 E.) & turn north (left). Go 5 miles & turn east (right) on E. Ridlen Rd. (300 N.). This farm is right past the pasture on the south side of the road.

Directions from Macon:

Go east on W. Andrews St. Rd. (400 N.) 2 miles to Jacobs Rd. then go south (right) 1 mile to E. Ridlen Rd. (300 N.) & turn east (left). This farm is right past the pasture on the south side of the road.

Point of Reference:

The pasture is part of Bryan Barnes' property. There house is just to the west of this farm. 10640 Jacobs Rd, Macon, IL

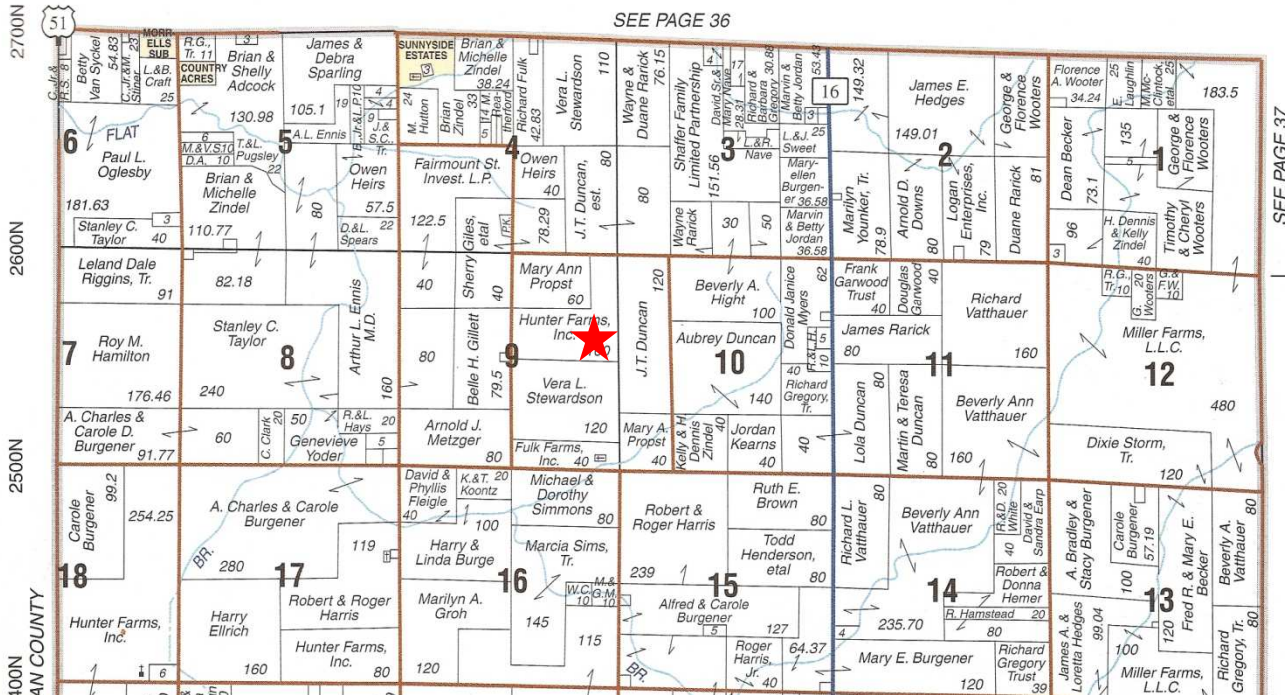
GPS Coordinates: N 39° 41' 50" & W 88° 57' 31"

Farm Name: East 100
Township: Flat Branch
Local Intersection: 2600 N. between 850 E. and 900 E.

Acreage: 100
County: Shelby

FLAT BRANCH

T.13N.-R.2E.



Directions from Hemer-Hunter Farm:

Go west $\frac{3}{4}$ mile to 1000 E. (Jacobs Rd. or Tower Hill Blacktop). Go south (left) 4 miles to 2600 N. Go west (right) just over 1 mile and the farm is on the south (right) side of the road. The farm also runs along 850 E. $\frac{1}{2}$ a mile past the intersection of 2600 N. and 850 E. Rd.

Directions from Moweaqua:

Travel east on the Moweaqua Blacktop (2800 N.) 1 mile to 800 E. Go south (right) 1 $\frac{1}{2}$ miles to 2650 N. and then go east (left) $\frac{1}{2}$ mile where you will have to south (right) on 850 E. Travel approximately $\frac{1}{2}$ mile to a T road and turn east on 2600 N. Travel about 1 mile and the field is on the south (right) side of the road.

Point of Reference:

Half a mile south of Troy Duncan's buildings and grain leg off on the east side of the road.

The west part of the L shape is directly across the road from Marie Gillett's: N. 850 E. Rd., Moweaqua, IL

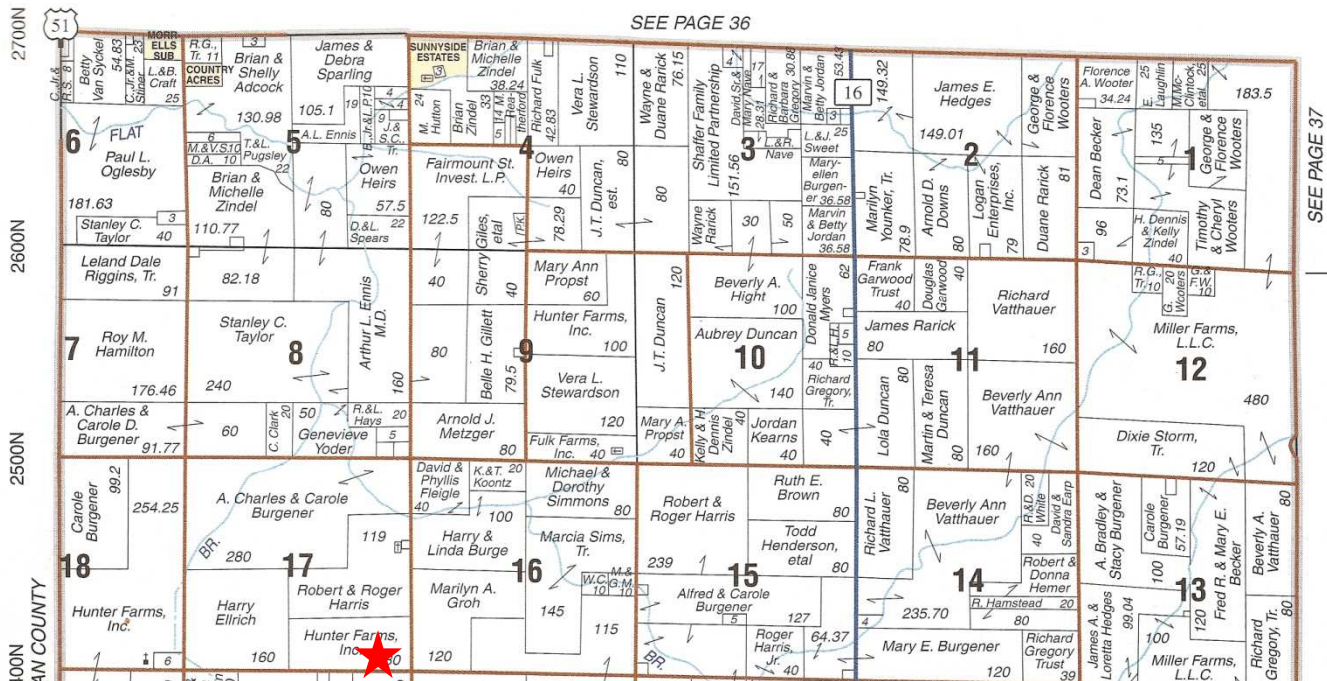
GPS Coordinates: N 39° 35' 31" & W 88° 59' 08"

Farm Name: Mose 80
Township: Flat Branch
Local Intersection: 800 E. and 2400 N.

Acreage: 80
Section: 17 **County:** Shelby

FLAT BRANCH

T.13N.-R.2E.



Directions from Hemer-Hunter Farm:

Go west $\frac{3}{4}$ mile to 1000 E. (Jacobs Rd. or Tower Hill Blacktop). Go south (left) 6 miles to 2400 N. Go west (right) 2 miles. The farm is on the northwest corner of the intersection.

Directions from Moweauqua:

Go east on 2800 N. (Moweauqua Blacktop) 1 mile to 800 E. Go south (right) for 4 miles to 2400 N. the farm is on the right or Northwest corner of the intersection.

Point of Reference:

$\frac{3}{4}$ of a mile south of Carole Burgener's house on the west side of the road.
 Carole Burgener: 798E. 2500 N Rd., Moweauqua, IL

GPS Coordinates: N 39° 34' 00" & W 88° 59' 42"

Glossary

80/Downs/Louise's Farm.....	16
Back 80.....	4
Clipston 40/New 40.....	3
Clipston 76/Borders'	12
Cook Farm.....	14
Corner 40.....	8
Cox/Griesbaum.....	19
Ditchy 40.....	7
Doc's.....	21
East 100.....	22
Field Across the Road.....	18
Groves.....	20
Hemer/Home Place	1
Hemer-Hays Ground.....	13
Hilvety 80.....	11
Larson.....	6
Long 80	2
McGraph 80.....	5
Mose 80.....	23
North 80.....	9
Orris Farm.....	15
South 80/Scott's Place.....	10
Weck Farm.....	17